



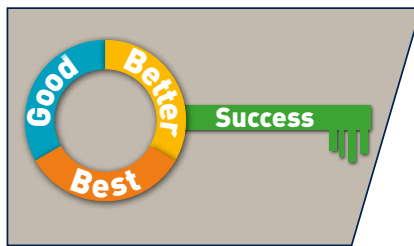
## BCH/SX Hoses and Fittings

EMEA Distribution Program



**Good – Better – Best** – engineered for your success.

## New hose classification for an easier hose selection



Parker Hose Products Division Europe supplies premier service by focussing on customer needs. To engineer customer's success by offering diversified products, we introduce a "Good, Better, Best" classification according to the quality standards and in line with the requirements of the individual applications.

**Customer's choice is the key.**

### Good

"Good" hoses are cost-effective products – fully meeting the main parameters of the traditional international standards and exceeding them in particular requirements, such as service life, appearance, environmental aspects etc. (BCH medium pressure hoses in combination with fitting series 16 and SX high pressure hoses with MP fittings).

### Good

**Medium Pressure**

**BCH1  
BCH2**

**New**   
Fitting Series  
Cr6Free plated

### Good

**High Pressure**

**SX35  
SX42**

   
Fitting Series

\* MP (Multipack) only

### Better

The category "Better" includes hose products which are exceeding the traditional international standards in the main parameters, such as working pressure, temperature, flexibility, impulse pressure resistance etc. These are the main qualities appreciated by the customers at the Parker well known *No-Skive* hoses – *Elite* medium pressure and Parkrimp high pressure.

### Better

**Medium Pressure**

**Elite**  
**462, 492**

   
Fitting Series

### Better

**High Pressure**

**Parkrimp**  
**701, 731**

   
Fitting Series

### Best

Category "Best" contains GLOBALCORE hose products which are meeting or even exceeding the latest and most demanding International Standard ISO 18752. GLOBALCORE is the world's first high performance, cohesive hose and fitting range that OEMs and end users have been asking for. GLOBALCORE hoses have constant working pressures of 21.0, 28.0, 35.0 and 42.0 MPa.

### Best

**Medium Pressure**

**GLOBALCORE™**  
**387, 487**

  
Fitting Series

### Best

**High Pressure**

**GLOBALCORE™**  
**787, 797**

  
Fitting Series

**Good – Better – Best** – engineered for your success.

## Technical comparison

### Good

**BCH** medium and **SX** high pressure hoses – meeting international technical standards – newly developed for demanding small and medium OEMs and general distribution.

### Better

Well known *Elite No-Skive* medium and **Parkrimp® No-Skive** high pressure hoses – exceeding the standards – highly appreciated in the very demanding MRO and OEM markets.

### Best

State-of-the-art **GLOBALCORE™** hose product range – exceeding the newest ISO 18752 – providing technical and economical excellence to the most demanding customers.

#### Medium Pressure

Size	Good			Better			Best		
	W.P. MPa	O.D. mm	B.R. mm	W.P. MPa	O.D. mm	B.R. mm	W.P. MPa	O.D. mm	B.R. mm
-4	22.5	11.5	75	28.0	11.5	75	21.0	11.5	50
-5	21.5	13.6	85	25.0	13.6	85	-	-	-
-6	18.0	15.5	90	22.5	15.5	90	21.0	15.5	65
-8	16.0	18.9	130	19.0	18.9	130	21.0	18.9	90
-10	13.0	22.2	150	15.0	22.2	150	21.0	22.2	100
-12	10.5	26.0	180	15.0	26.0	180	21.0	26.0	120
-16	8.8	33.3	230	11.0	33.3	230	21.0	33.3	150
Impulse tested at:	125 % of W. P. , 100 °C, 150 kc			125 % of W. P. , 100 °C, 300 kc			133 % of W. P. , 125 °C, 400 kc		

Size	Good			Better			Best		
	W.P. MPa	O.D. mm	B.R. mm	W.P. MPa	O.D. mm	B.R. mm	W.P. MPa	O.D. mm	B.R. mm
-4	40.0	13.4	75	42.5	13.4	75	28.0	13.4	50
-5	35.0	15.0	85	40.0	15.0	85	-	-	-
-6	33.0	17.2	90	35.0	17.2	90	28.0	17.2	65
-8	27.5	20.4	130	31.0	20.4	130	28.0	20.4	90
-10	25.0	23.9	170	28.0	23.9	160	28.0	23.9	100
-12	21.5	27.7	200	28.0	27.7	195	28.0	27.7	120
-16	16.5	35.4	250	21.0	35.4	250	28.0	35.4	150
Impulse tested at:	133 % of W. P. , 100 °C, 200 kc			133 % of W. P. , 100 °C, 400 kc			133 % of W. P. , 125 °C, 400 kc		

#### High Pressure

Size	Good			Better			Best		
	W.P. MPa	O.D. mm	B.R. mm	W.P. MPa	O.D. mm	B.R. mm	W.P. MPa	O.D. mm	B.R. mm
-12	35.0	32.4	240	35.0*	32.2*	300*	35.0	27.9	120
-16	35.0	38.2	300	38.0	39.0	340	35.0	35.7	150
-20	35.0	46.3	420	-	-	-	35.0	44.9	210
Impulse tested at:	120 % of W. P. , 120 °C, 500 kc			133 % of W. P. , 100 °C, 800 kc			133 % of W. P. , 125 °C, 2000 kc		

Size	Good			Better			Best		
	W.P. MPa	O.D. mm	B.R. mm	W.P. MPa	O.D. mm	B.R. mm	W.P. MPa	O.D. mm	B.R. mm
-12	42.0	32.4	260	42.0	32.0	280	42.0	27.9	135
-16	42.0	38.2	330	-	-	-	42.0	35.7	165
-20	42.0	46.3	400	-	-	-	42.0	44.9	225
Impulse tested at:	120 % of W. P. , 120 °C, 500 kc			133 % of W. P. , 100 °C, 800 kc			133 % of W. P. , 125 °C, 2000 kc		

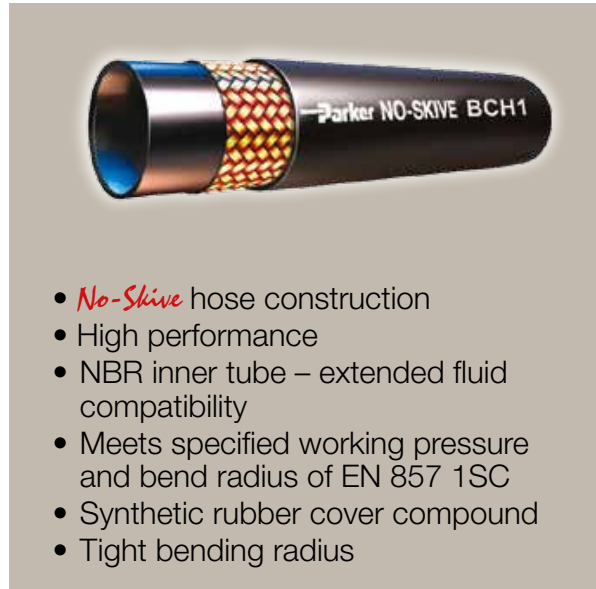
**Medium Pressure  
Standard**

**Parkrimp No-Skive Hose  
Good BCH1**

**BCH1**

*No-Skive*

EN 857 1SC – ISO 11237



- *No-Skive* hose construction
- High performance
- NBR inner tube – extended fluid compatibility
- Meets specified working pressure and bend radius of EN 857 1SC
- Synthetic rubber cover compound
- Tight bending radius

**Primary Applications**

Demanding medium pressure hydraulic applications in all markets

**Construction**

Inner Tube: Nitrile (NBR)  
Reinforcement: One high tensile steel wire braid  
Cover: Synthetic rubber

Temperature Range ..... -40 °C up to +100 °C

Exception: Air ..... max. +70 °C  
Water ..... max. +85 °C

**Recommended Fluids**

Petroleum and water-glycol based fluids, lubricating oils, air and water. For air above 1.7 MPa, the hose cover must be pin-pricked.

Consult the chemical compatibility at CAT/4400 for more detailed information.

**Fitting Series**



Part Number	Hose I.D.				Hose O.D. mm	Pressure rating				min. bend radius mm	weight kg
	DN	Inch	Size	mm		max. working pressure		min. burst pressure			
						MPa	psi	MPa	psi		
BCH1-4	6	1/4	-4	6.3	11.5	22.5	3260	90.0	13050	75	0.17
BCH1-5	8	5/16	-5	7.9	13.6	21.5	3110	86.0	12470	85	0.20
BCH1-6	10	3/8	-6	9.5	15.5	18.0	2610	72.0	10440	90	0.24
BCH1-8	12	1/2	-8	12.7	18.9	16.0	2320	64.0	9280	130	0.33
BCH1-10	16	5/8	-10	15.9	22.2	13.0	1885	52.0	7540	150	0.41
BCH1-12	20	3/4	-12	19.1	26.0	10.5	1520	42.0	6080	180	0.56
BCH1-16	25	1	-16	25.4	33.3	8.8	1275	35.2	5100	230	0.75

The combination of high temperature and high pressure could reduce the hose life.

**Hose layline example**

**Parker** NO-SKIVE BCH1-6 WP 18.0 MPa (2610 PSI) | •• 10 mm (3/8) EN857/1SC/10 MADE IN ITALY

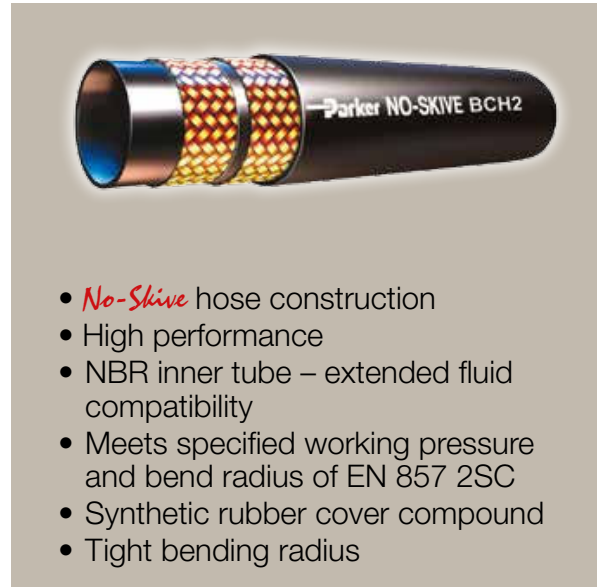
**Medium Pressure  
Standard**

**Parkrimp No-Skive Hose  
Good BCH2**

**BCH2**

*No-Skive*

EN 857 2SC – ISO 11237



- *No-Skive* hose construction
- High performance
- NBR inner tube – extended fluid compatibility
- Meets specified working pressure and bend radius of EN 857 2SC
- Synthetic rubber cover compound
- Tight bending radius

**Primary Applications**

Demanding medium pressure hydraulic applications in all markets

**Construction**

Inner Tube: Nitrile (NBR)  
Reinforcement: Two high tensile steel wire braid  
Cover: Synthetic rubber

Temperature Range ..... -40 °C up to +100 °C

Exception: Air ..... max. +70 °C  
Water ..... max. +85 °C

**Recommended Fluids**

Petroleum and water-glycol based fluids, lubricating oils, air and water. For air above 1.7 MPa, the hose cover must be pin-pricked.  
Consult the chemical compatibility at CAT/4400 for more detailed information.

**Fitting Series**



Part Number	Hose I.D.				Hose O.D. mm	Pressure rating				min. bend radius mm	weight kg
	DN	Inch	Size	mm		max. working pressure		min. burst pressure			
						MPa	psi	MPa	psi		
BCH2-4	6	1/4	-4	6.3	13.4	40.0	5800	160.0	23200	75	0.28
BCH2-5	8	5/16	-5	7.9	15.0	35.0	5000	140.0	20000	85	0.31
BCH2-6	10	3/8	-6	9.5	17.2	33.0	4800	132.0	19200	90	0.39
BCH2-8	12	1/2	-8	12.7	20.4	27.5	4000	110.0	16000	130	0.50
BCH2-10	16	5/8	-10	15.9	23.9	25.0	3600	100.0	14400	170	0.63
BCH2-12	20	3/4	-12	19.1	27.7	21.5	3100	86.0	12400	200	0.81
BCH2-16	25	1	-16	25.4	35.4	16.5	2400	66.0	9600	250	1.06

The combination of high temperature and high pressure could reduce the hose life.

**Hose layline example**

**Parker** NO-SKIVE BCH2-6 WP 33 MPa (4800 PSI) | •• 10 mm (3/8) EN857/2SC/10 MADE IN ITALY



High Pressure  
Standard

Parkrimp No-Skive Hose  
**Good** SX35

## SX35

### No-Skive Multispiral

ISO 3862 Type R13 – Parker Specifications

#### Primary Applications

General high pressure hydraulic applications

#### Applicable Specifications

ISO 3862 Type R13 – Parker Specifications

#### Construction

Inner Tube: Synthetic rubber  
Reinforcement: Four spirals high-tensile steel wire  
Cover: Synthetic rubber

Temperature Range ..... -40 °C up to +125 °C

Exception: Air ..... max. +70 °C  
Water ..... max. +85 °C



- *No-Skive* hose construction
- High performance
- Reinforcement of four high tensile steel wires
- Constant working pressure of 35.0 MPa
- Temperature range up to +125 °C

#### Recommended Fluids

Petroleum and water-glycol based fluids, lubricating oils, air and water. For air above 1.7 MPa, the hose cover must be pin-pricked.

Consult the chemical compatibility at CAT/4400 for more detailed information.

#### Fitting Series

(Details please find in CAT/4400)



Part Number	Hose I.D.				Hose O.D. mm	Pressure rating				min. bend radius mm	weight kg
	DN	Inch	Size	mm		max. working pressure		min. burst pressure			
						MPa	psi	MPa	psi		
SX35-12	20	3/4	-12	19.1	32.4	35.0	5000	140.0	20000	240	1.72
SX35-16	25	1	-16	25.4	38.2	35.0	5000	140.0	20000	300	2.14
SX35-20	32	1 1/4	-20	31.5	46.3	35.0	5000	140.0	20000	420	2.96

Hose layline example

**Parker** NO-SKIVE - SX35-12 WP 35,0 MPa (5000 PSI) I° ISO 3862 4SP / R13 - 19 mm (3/4") MADE IN ITALY

**High Pressure**  
Standard

**Parkrimp No-Skive Hose**  
**Good** SX42

**SX42**

**No-Skive Multispiral**

ISO 3862 Type R15 – Parker Specifications



- **No-Skive** hose construction
- High performance
- Reinforcement of four or six high tensile steel wires
- Constant working pressure of 42.0 MPa
- Temperature range up to +125 °C

**Primary Applications**

General high pressure hydraulic applications

**Applicable Specifications**

ISO 3862 Type R15 – Parker Specifications

**Construction**

Inner Tube: Synthetic rubber  
Reinforcement: Four or six spirals high-tensile steel wire  
Cover: Synthetic rubber

Temperature Range ..... -40 °C up to +125 °C

Exception: Air ..... max. +70 °C  
Water ..... max. +85 °C

**Recommended Fluids**

Petroleum and water-glycol based fluids, lubricating oils, air and water. For air above 1.7 MPa, the hose cover must be pin-pricked.

Consult the chemical compatibility at CAT/4400 for more detailed information.

**Fitting Series**

(Details please find in CAT/4400)

Size -12

Size -16 and -20



Part Number	Hose I.D.				Hose O.D. mm	Pressure rating				min. bend radius mm	weight kg
	DN	Inch	Size	mm		max. working pressure		min. burst pressure			
						MPa	psi	MPa	psi		
SX42-12	20	3/4	-12	19.1	32.4	42.0	6000	168.0	24000	260	1.72
SX42-16	25	1	-16	25.4	38.2	42.0	6000	168.0	24000	330	1.74
SX42-20	32	1 1/4	-20	31.5	46.3	42.0	6000	168.0	24000	400	2.98

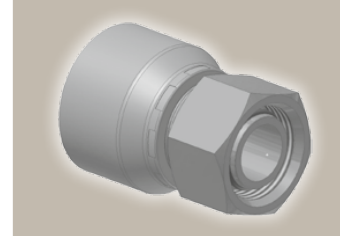
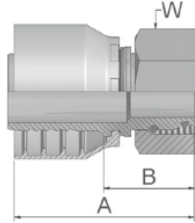
Hose layline example



Medium Pressure  
DIN – Metric

Parkrimp No-Skive Fittings  
**Good** 16 Series

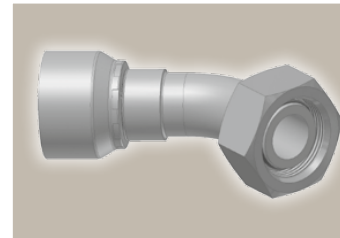
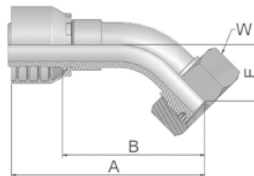
**CA** **Female Metric 24°  
Light Series with O-Ring  
Swivel – Straight**  
ISO 12151-2-SWS-L – DKOL



Part Number	Hose I.D.				Thread metric	Tube O.D. mm	A mm	B mm	W mm
	DN	Inch	Size	mm					
1CA16-6-4	6	1/4	-4	6.4	M12x1.5	6	45	22	14
1CA16-8-4	6	1/4	-4	6.4	M14x1.5	8	44	22	17
1CA16-10-4	6	1/4	-4	6.4	M16x1.5	10	45	22	19
1CA16-10-5	8	5/16	-5	7.9	M16x1.5	10	45	22	19
1CA16-12-5	8	5/16	-5	7.9	M18x1.5	12	45	22	22
1CA16-10-6	10	3/8	-6	9.5	M16x1.5	10	46	23	19
1CA16-12-6	10	3/8	-6	9.5	M18x1.5	12	45	23	22
1CA16-15-8	12	1/2	-8	12.7	M22x1.5	15	50	26	27
1CA16-18-10	16	5/8	-10	15.9	M26x1.5	18	50	25	32
1CA16-18-12	19	3/4	-12	19.1	M26x1.5	18	51	25	32
1CA16-22-12	19	3/4	-12	19.1	M30x2	22	56	30	36
1CA16-28-16	25	1	-16	25.4	M36x2	28	63	33	41

Hose fittings are delivered with ozone resistant Nitrile (NBR) O-ring as a standard version. Working temperature from -40 °C up to +105 °C.  
Hose fittings with special O-rings (Viton or EPDM) available on request. O-ring dimensions and part-numbers see in CAT/4400.

**CE** **Female Metric 24°  
Light Series with O-Ring  
Swivel – 45° Elbow**  
ISO 12151-2-SWE -L – DKOL 45°



Part Number	Hose I.D.				Thread metric	Tube O.D. mm	A mm	B mm	E mm	W mm
	DN	Inch	Size	mm						
1CE16-6-4	6	1/4	-4	6.4	M12x1.5	6	68	45	19	14
1CE16-8-4	6	1/4	-4	6.4	M14x1.5	8	57	35	16	17
1CE16-10-4	6	1/4	-4	6.4	M16x1.5	10	58	35	16	19
1CE16-10-5	8	5/16	-5	7.9	M16x1.5	10	66	44	15	19
1CE16-12-5	8	5/16	-5	7.9	M18x1.5	12	60	37	16	22
1CE16-12-6	10	3/8	-6	9.5	M18x1.5	12	68	45	19	22
1CE16-15-8	12	1/2	-8	12.7	M22x1.5	15	71	47	22	27
1CE16-18-10	16	5/8	-10	15.9	M26x1.5	18	75	50	23	32
1CE16-22-12	19	3/4	-12	19.1	M30x2	22	88	62	26	36
1CE16-28-16	25	1	-16	25.4	M36x 2	28	113	83	33	41

Hose fittings are delivered with ozone resistant Nitrile (NBR) O-ring as a standard version. Working temperature from -40 °C up to +105 °C.  
Hose fittings with special O-rings (Viton or EPDM) available on request. O-ring dimensions and part-numbers see in CAT/4400.

Approved **fitting series** for hose types:

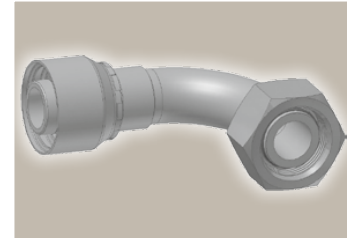
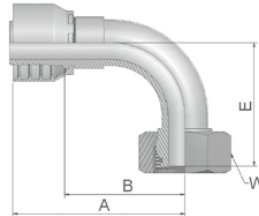
**16** BCH1 BCH2



Medium Pressure  
DIN – Metric

Parkrimp No-Skive Fittings  
**Good** 16 Series

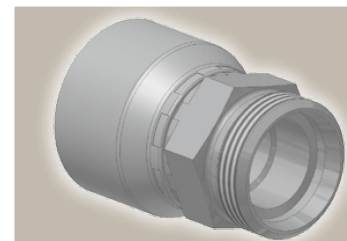
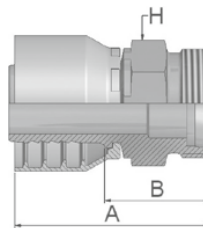
**CF** **Female Metric 24°  
Light Series with O-Ring  
Swivel – 90° Elbow**  
ISO 12151-2-SWE-L – DKOL 90°



Part Number	Hose I.D.				Thread metric	Tube O.D. mm	A mm	B mm	E mm	W mm
	DN	Inch	Size	mm						
1CF16-6-4	6	1/4	-4	6.4	M12x1.5	6	55	33	33	14
1CF16-8-4	6	1/4	-4	6.4	M14x1.5	8	49	27	29	17
1CF16-10-4	6	1/4	-4	6.4	M16x1.5	10	50	28	29	19
1CF16-10-5	8	5/16	-5	7.9	M16x1.5	10	60	37	29	19
1CF16-12-5	8	5/16	-5	7.9	M18x1.5	12	59	37	30	22
1CF16-10-6	10	3/8	-6	9.5	M16x1.5	10	60	37	37	19
1CF16-12-6	10	3/8	-6	9.5	M18x1.5	12	58	35	35	22
1CF16-15-8	12	1/2	-8	12.7	M22x1.5	15	61	37	43	27
1CF16-18-10	16	5/8	-10	15.9	M26x1.5	18	66	41	45	32
1CF16-18-12	19	3/4	-12	19.1	M26x1.5	18	80	54	56	32
1CF16-22-12	19	3/4	-12	19.1	M30x2	22	80	54	55	36
1CF16-28-16	25	1	-16	25.4	M36x2	28	101	72	71	41

Hose fittings are delivered with ozone resistant Nitrile (NBR) O-ring as a standard version. Working temperature from -40 °C up to +105 °C. Hose fittings with special O-rings (Viton or EPDM) available on request. O-ring dimensions and part-numbers see in CAT/4400.

**DO** **Male Metric 24°  
Light Series – Rigid  
Straight**  
ISO 12151-2-S-L – CEL



Part Number	Hose I.D.				Thread metric	Tube O.D. mm	A mm	B mm	H mm
	DN	Inch	Size	mm					
1D016-6-4	6	1/4	-4	6.4	M12x1.5	6	43	20	12
1D016-8-4	6	1/4	-4	6.4	M14x1.5	8	44	22	14
1D016-10-5	8	5/16	-5	7.9	M16x1.5	10	46	24	17
1D016-10-6	10	3/8	-6	9.5	M16x1.5	10	47	24	17
1D016-12-6	10	3/8	-6	9.5	M18x1.5	12	47	24	19
1D016-15-8	12	1/2	-8	12.7	M22x1.5	15	50	26	22
1D016-22-12	19	3/4	-12	19.1	M30x2	22	59	33	30
1D016-28-16	25	1	-16	25.4	M36x2	28	65	35	36

Approved **fitting series** for hose types:

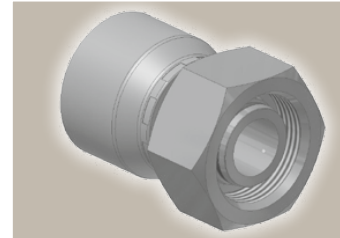
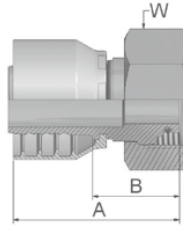
**16** BCH1 BCH2

Medium Pressure  
DIN – Metric

Parkrimp No-Skive Fittings  
**Good** 16 Series

## C9 Female Metric 24° – Swivel Heavy Series with O-Ring Straight

ISO 12151-2-SWS-S – DKOS

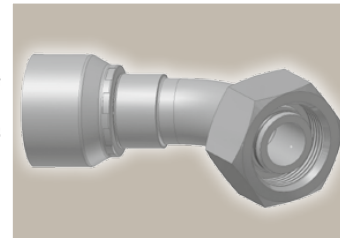
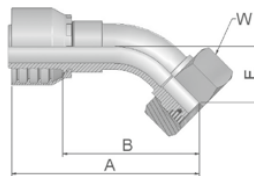


Part Number	Hose I.D.				Thread metric	Tube O.D. mm	A mm	B mm	W mm
	DN	Inch	Size	mm					
1C916-8-4	6	1/4	-4	6.4	M16x1.5	8	45	23	19
1C916-10-4	6	1/4	-4	6.4	M18x1.5	10	44	22	22
1C916-10-5	8	5/16	-5	7.9	M18x1.5	10	45	22	22
1C916-12-5	8	5/16	-5	7.9	M20x1.5	12	47	24	24
1C916-10-6	10	3/8	-6	9.5	M18x1.5	10	45	23	22
1C916-12-6	10	3/8	-6	9.5	M20x1.5	12	47	24	24
1C916-16-8	12	1/2	-8	12.7	M24x1.5	16	51	28	30
1C916-20-10	16	5/8	-10	15.9	M30x2	20	53	28	36
1C916-20-12	19	3/4	-12	19.1	M30x2	20	56	30	36
1C916-25-12	19	3/4	-12	19.1	M36x2	25	61	35	46
1C916-30-16	25	1	-16	25.4	M42x2	30	67	38	50

Hose fittings are delivered with ozone resistant Nitrile (NBR) O-ring as a standard version. Working temperature from -40 °C up to +105 °C.  
Hose fittings with special O-rings (Viton or EPDM) available on request. O-ring dimensions and part-numbers see in CAT/4400.

## OC Female Metric 24° – Swivel Heavy Series with O-Ring 45° Elbow

ISO 12151-2 – SWE -S – DKOS 45°



Part Number	Hose I.D.				Thread metric	Tube O.D. mm	A mm	B mm	E mm	W mm
	DN	Inch	Size	mm						
10C16-8-4	6	1/4	-4	6.4	M16x1.5	8	58	35	16	19
10C16-10-4	6	1/4	-4	6.4	M18x1.5	10	57	35	16	22
10C16-10-5	8	5/16	-5	7.9	M18x1.5	10	60	38	17	22
10C16-12-5	8	5/16	-5	7.9	M20x1.5	12	69	47	17	24
10C16-12-6	10	3/8	-6	9.5	M20x1.5	12	69	46	20	24
10C16-16-8	12	1/2	-8	12.7	M24x1.5	16	72	49	23	30
10C16-20-10	16	5/8	-10	15.9	M30x2	20	76	51	25	36
10C16-20-12	19	3/4	-12	19.1	M30x2	20	90	64	28	36
10C16-25-12	19	3/4	-12	19.1	M36x2	25	91	66	29	46
10C16-30-16	25	1	-16	25.4	M42x2	30	115	86	36	50

Hose fittings are delivered with ozone resistant Nitrile (NBR) O-ring as a standard version. Working temperature from -40 °C up to +105 °C.  
Hose fittings with special O-rings (Viton or EPDM) available on request. O-ring dimensions and part-numbers see in CAT/4400.

Approved **fitting series** for hose types:

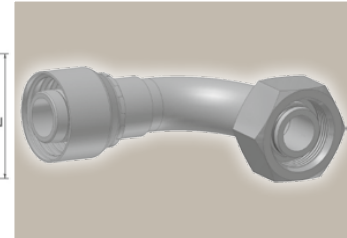
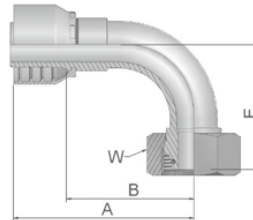
**16** BCH1 BCH2

Medium Pressure  
DIN – Metric

Parkrimp No-Skive Fittings  
**Good** 16 Series

## 1C Female Metric 24° – Swivel Heavy Series with O-Ring 90° Elbow

ISO 12151-2-SWE-S – DKOS 90°

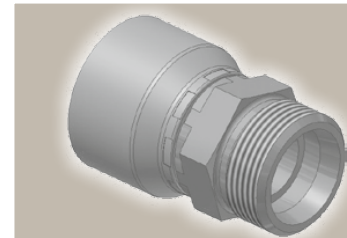
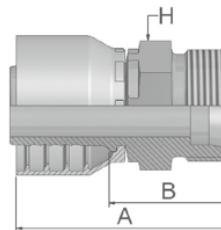


Part Number	Hose I.D.				Thread metric	Tube O.D. mm	A mm	B mm	E mm	W mm
	DN	Inch	Size	mm						
11C16-8-4	6	1/4	-4	6.4	M16x1.5	8	48	26	29	19
11C16-10-4	6	1/4	-4	6.4	M18x1.5	10	48	26	29	22
11C16-10-5	8	5/16	-5	7.9	M18x1.5	10	59	36	31	22
11C16-12-5	8	5/16	-5	7.9	M20x1.5	12	59	36	31	24
11C16-10-6	10	3/8	-6	9.5	M18x1.5	10	59	37	36	22
11C16-12-6	10	3/8	-6	9.5	M20x1.5	12	58	35	37	24
11C16-16-8	12	1/2	-8	12.7	M24x1.5	16	61	37	45	30
11C16-20-10	16	5/8	-10	15.9	M30x2	20	65	40	48	36
11C16-20-12	19	3/4	-12	19.1	M30x2	20	79	54	58	36
11C16-25-12	19	3/4	-12	19.1	M36x2	25	80	54	59	46
11C16-30-16	25	1	-16	25.4	M42x2	30	104	75	75	50

Hose fittings are delivered with ozone resistant Nitrile (NBR) O-ring as a standard version. Working temperature from -40 °C up to +105 °C. Hose fittings with special O-rings (Viton or EPDM) available on request. O-ring dimensions and part-numbers see in CAT/4400.

## D2 Male Metric 24° – Rigid Heavy Series – Straight

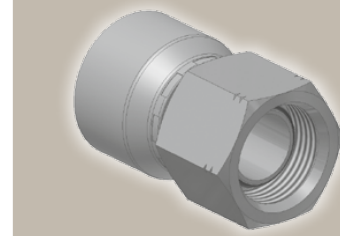
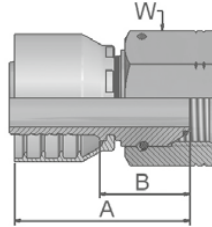
ISO 12151-2-S-S – CES



Part Number	Hose I.D.				Thread metric	Tube O.D. mm	A mm	B mm	H mm
	DN	Inch	Size	mm					
1D216-8-4	6	1/4	-4	6.4	M16x1.5	8	47	24	17
1D216-10-4	6	1/4	-4	6.4	M18x1.5	10	48	26	19
1D216-12-5	8	5/16	-5	7.9	M20x1.5	12	48	26	22
1D216-12-6	10	3/8	-6	9.5	M20x1.5	12	49	26	22
1D216-16-8	12	1/2	-8	12.7	M24x1.5	16	52	29	24
1D216-20-10	16	5/8	-10	15.9	M30x2	20	57	32	30
1D216-20-12	19	3/4	-12	19.1	M30x2	20	61	35	30
1D216-25-12	19	3/4	-12	19.1	M36x2	25	64	38	36

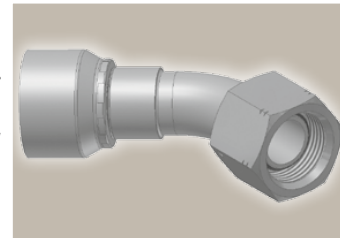
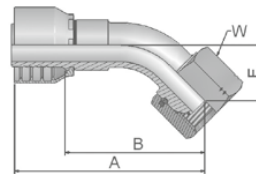
Approved **fitting series** for hose types:

**16** BCH1 BCH2

**Medium Pressure  
BSP**
**Parkrimp No-Skive Fittings  
Good 16 Series**
**EA** **BSP Swivel Female  
with O-Ring (60° Cone)**  
 BS 5200 – ISO 12151-6 – DKOR


Part Number	Hose I.D.				Thread BSP	A mm	B mm	W mm
	DN	Inch	Size	mm				
1EA16-4-4	6	1/4	-4	6.4	1/4x19	39	17	19
1EA16-6-4	6	1/4	-4	6.4	3/8x19	47	25	22
1EA16-6-6	10	3/8	-6	9.5	3/8x19	43	20	22
1EA16-8-6	10	3/8	-6	9.5	1/2x14	51	28	27
1EA16-8-8	12	1/2	-8	12.7	1/2x14	45	22	27
1EA16-10-10	16	5/8	-10	15.9	5/8x14	46	21	30
1EA16-12-12	19	3/4	-12	19.1	3/4x14	49	23	32
1EA16-16-16	25	1	-16	25.4	1x11	61	31	41

Hose fittings are delivered with ozone resistant Nitrile (NBR) O-ring as a standard version. Working temperature from -40 °C up to +105 °C.  
 Hose fittings with special O-rings (Viton or EPDM) available on request. O-ring dimensions and part-numbers see in CAT/4400.

**EB** **BSP Swivel Female  
with O-Ring  
45° Elbow (60° Cone)**  
 BS 5200 – ISO 12151-6 – DKOR 45°


Part Number	Hose I.D.				Thread BSP	A mm	B mm	E mm	W mm
	DN	Inch	Size	mm					
1EB16-4-4	6	1/4	-4	6.4	1/4x19	55	33	14	19
1EB16-6-4	6	1/4	-4	6.4	3/8x19	58	35	15	22
1EB16-6-6	10	3/8	-6	9.5	3/8x19	69	46	17	22
1EB16-8-6	10	3/8	-6	9.5	1/2x14	70	48	19	27
1EB16-8-8	12	1/2	-8	12.7	1/2x14	71	48	20	27
1EB16-10-10	16	5/8	-10	15.9	5/8x14	75	50	22	30
1EB16-12-12	19	3/4	-12	19.1	3/4x14	89	63	27	32
1EB16-16-16	25	1	-16	25.4	1x11	112	83	33	41

Hose fittings are delivered with ozone resistant Nitrile (NBR) O-ring as a standard version. Working temperature from -40 °C up to +105 °C.  
 Hose fittings with special O-rings (Viton or EPDM) available on request. O-ring dimensions and part-numbers see in CAT/4400.

 Approved **fitting series** for hose types:



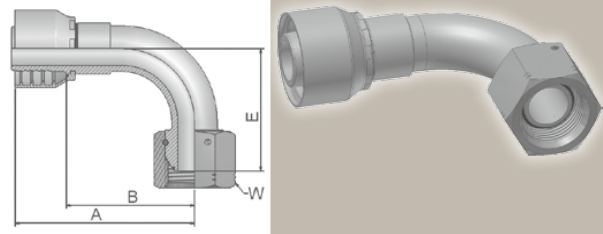
Medium Pressure  
BSP

Parkrimp No-Skive Fittings  
**Good** 16 Series

**EC**

**BSP Swivel Female  
with O-Ring  
90° Elbow (60° Cone)**

BS 5200 – ISO 12151-6 – DKOR 90°



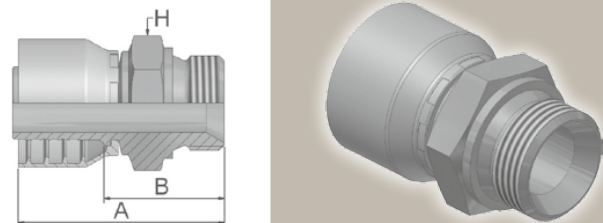
Part Number	Hose I.D.				Thread BSP	A mm	B mm	E mm	W mm
	DN	Inch	Size	mm					
1EC16-4-4	6	1/4	-4	6.4	1/4x19	48	26	24	19
1EC16-6-4	6	1/4	-4	6.4	3/8x19	49	27	27	22
1EC16-6-6	10	3/8	-6	9.5	3/8x19	60	38	33	22
1EC16-8-6	10	3/8	-6	9.5	1/2x14	60	38	36	27
1EC16-8-8	12	1/2	-8	12.7	1/2x14	63	40	40	27
1EC16-10-10	16	5/8	-10	15.9	5/8x14	70	45	44	30
1EC16-12-12	19	3/4	-12	19.1	3/4x14	79	54	55	32
1EC16-16-16	25	1	-16	25.4	1x11	104	75	71	41

Hose fittings are delivered with ozone resistant Nitrile (NBR) O-ring as a standard version. Working temperature from -40 °C up to +105 °C.  
Hose fittings with special O-rings (Viton or EPDM) available on request. O-ring dimensions and part-numbers see in CAT/4400.

**D9**

**Male BSP Parallel Pipe  
Rigid – Straight (60° Cone)**

BS5200 – AGR



Part Number	Hose I.D.				Thread BSP	A mm	B mm	H mm
	DN	Inch	Size	mm				
1D916-4-4	6	1/4	-4	6.4	1/4x19	49	27	19
1D916-6-4	6	1/4	-4	6.4	3/8x19	54	31	22
1D916-6-6	10	3/8	-6	9.5	3/8x19	54	31	22
1D916-8-6	10	3/8	-6	9.5	1/2x14	55	33	27
1D916-8-8	12	1/2	-8	12.7	1/2x14	57	33	27
1D916-10-10	16	5/8	-10	15.9	5/8x14	60	35	30
1D916-12-12	19	3/4	-12	19.1	3/4x14	62	36	32
1D916-16-16	25	1	-16	25.4	1x11	72	42	41

Approved **fitting series** for hose types:

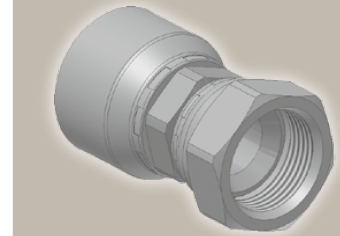
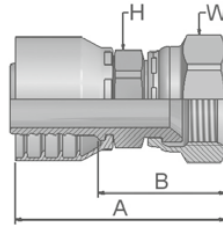
**16** BCH1 BCH2



Medium Pressure  
SAE

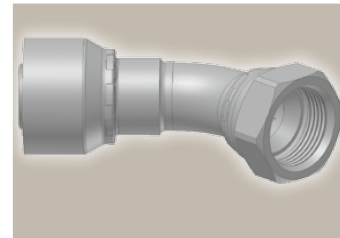
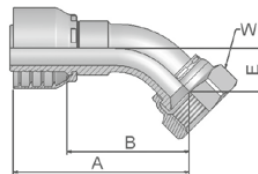
Parkrimp No-Skive Fittings  
**Good** 16 Series

**06/68** Female – JIC 37°  
SAE 45° Dual Flare  
Swivel – Straight  
ISO12151-5-SWS – DKJ



Part Number	Hose I.D.				Thread UNF	A mm	B mm	H mm	W mm
	DN	Inch	Size	mm					
16816-4-4	6	1/4	-4	6.4	7/16x20	51	28	14	17
10616-6-4	6	1/4	-4	6.4	9/16x18	53	31	14	19
16816-5-5	8	5/16	-5	7.9	1/2x20	52	30	14	17
10616-6-6	10	3/8	-6	9.5	9/16x18	52	29	17	19
16816-8-6	10	3/8	-6	9.5	3/4x16	56	34	17	22
16816-8-8	12	1/2	-8	12.7	3/4x16	56	32	22	22
16816-10-8	12	1/2	-8	12.7	7/8x14	62	38	22	27
16816-10-10	16	5/8	-10	15.9	7/8x14	60	35	22	27
10616-12-10	16	5/8	-10	15.9	1 1/16x12	64	39	27	32
10616-12-12	19	3/4	-12	19.1	1 1/16x12	67	41	27	32
10616-16-12	19	3/4	-12	19.1	1 5/16x12	71	45	32	41
10616-16-16	25	1	-16	25.4	1 5/16x12	75	46	32	41

**37/3V** Female JIC 37°  
SAE 45° – Dual Flare  
Swivel Female 45° Elbow  
ISO 12151-5-SWE 45° – DKJ 45°



Part Number	Hose I.D.				Thread UNF	A mm	B mm	E mm	W mm
	DN	Inch	Size	mm					
13V16-4-4	6	1/4	-4	6.4	7/16x20	51	29	10	17
13716-6-4	6	1/4	-4	6.4	9/16x18	53	31	11	19
13716-6-6	10	3/8	-6	9.5	9/16x18	60	37	11	19
13V16-8-6	10	3/8	-6	9.5	3/4x16	67	44	15	22
13V16-8-8	12	1/2	-8	12.7	3/4x16	61	37	15	22
13V16-10-8	12	1/2	-8	12.7	7/8x14	68	44	16	27
13V16-10-10	16	5/8	-10	15.9	7/8x14	69	44	16	27
13716-12-10	16	5/8	-10	15.9	1 1/16x12	74	49	21	32
13716-12-12	19	3/4	-12	19.1	1 1/16x12	83	58	22	32
13716-16-12	19	3/4	-12	19.1	1 5/16x12	84	58	24	41
13716-16-16	25	1	-16	25.4	1 5/16x12	99	70	24	41

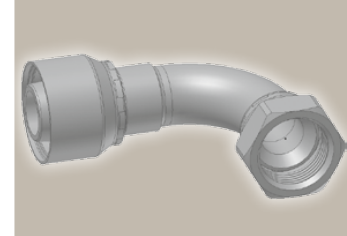
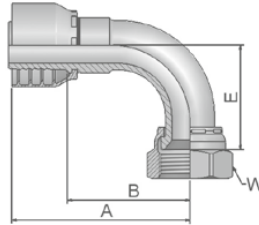
Approved **fitting series** for hose types:

**16** BCH1 BCH2

Medium Pressure  
SAE

Parkrimp No-Skive Fittings  
**Good** 16 Series

**39/3W Female JIC 37°  
SAE 45° – Dual Flare  
Swivel Female 90° Elbow**  
ISO 12151-5-SWES – DKJ 90°



Part Number	Hose I.D.				Thread UNF	A mm	B mm	E mm	W mm
	DN	Inch	Size	mm					
13W16-4-4	6	1/4	-4	6.4	7/16x20	46	24	21	17
13916-6-4	6	1/4	-4	6.4	9/16x18	48	25	23	19
13916-6-6	10	3/8	-6	9.5	9/16x18	50	28	23	19
13W16-8-6	10	3/8	-6	9.5	3/4x16	59	36	29	22
13W16-8-8	12	1/2	-8	12.7	3/4x16	55	31	29	22
13W16-10-8	12	1/2	-8	12.7	7/8x14	62	39	32	27
13W16-10-10	16	5/8	-10	15.9	7/8x14	69	44	33	27
13916-12-10	16	5/8	-10	15.9	1 1/16x12	74	49	48	32
13916-12-12	19	3/4	-12	19.1	1 1/16x12	80	54	48	32
13916-16-12	19	3/4	-12	19.1	1 5/16x12	80	54	56	41
13916-16-16	25	1	-16	25.4	1 5/16x12	98	68	56	41

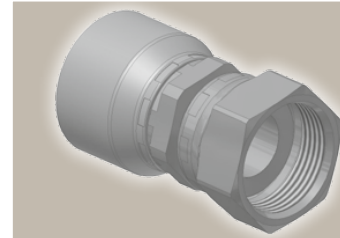
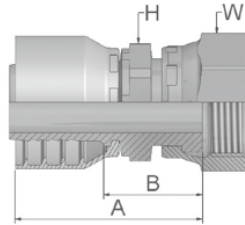
Approved **fitting series** for hose types:

**16** BCH1 BCH2

Medium Pressure  
ORFS

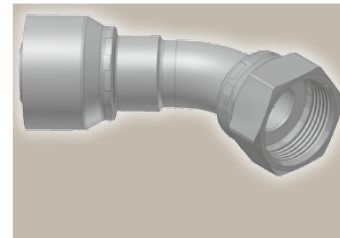
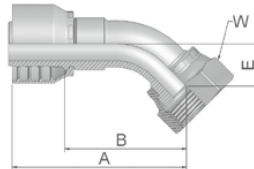
Parkrimp No-Skive Fittings  
**Good** 16 Series

**JC** **Female ORFS  
Swivel – Straight  
Short**  
ISO 12151-1 – SWSA  
SAE J516 – ORFS



Part Number	Hose I.D.				Thread UNF	A mm	B mm	H mm	W mm
	DN	Inch	Size	mm					
1JC16-4-4	6	1/4	-4	6.4	9/16x18	44	22	14	17
1JC16-6-6	10	3/8	-6	9.5	11/16x16	43	20	17	22
1JC16-8-8	12	1/2	-8	12.7	13/16x16	46	22	22	24
1JC16-10-10	16	5/8	-10	15.9	1x14	51	26	24	30
1JC16-12-12	19	3/4	-12	19.1	1 3/16x12	56	30	30	36
1JC16-16-16	25	1	-16	25.4	1 7/16x12	63	33	36	41

**J7** **Female ORFS – Swivel  
45° Elbow**  
ISO 12151-1 – SWE 45°  
SAE J516 – ORFS 45°



Part Number	Hose I.D.				Thread UNF	A mm	B mm	E mm	W mm
	DN	Inch	Size	mm					
1J716-4-4	6	1/4	-4	6.4	9/16x18	53	31	10	17
1J716-6-6	10	3/8	-6	9.5	11/16x16	53	31	11	22
1J716-8-8	12	1/2	-8	12.7	13/16x16	61	38	15	24
1J716-10-10	16	5/8	-10	15.9	1x14	72	46	16	30
1J716-12-12	19	3/4	-12	19.1	1 3/16x12	83	57	21	36
1J716-16-16	25	1	-16	25.4	1 7/16x12	99	69	24	41

Approved **fitting series** for hose types:

**16** BCH1 BCH2

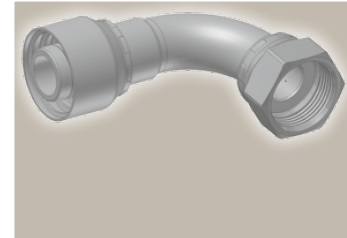
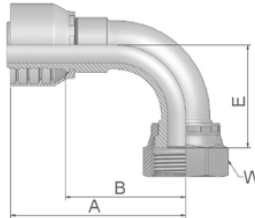
Medium Pressure  
ORFS

Parkrimp No-Skive Fittings  
**Good** 16 Series

**J9**

**Female ORFS – Swivel  
90° Elbow – Short Drop**

ISO 12151-1 – SWES  
SAE J516 – ORFS 90°

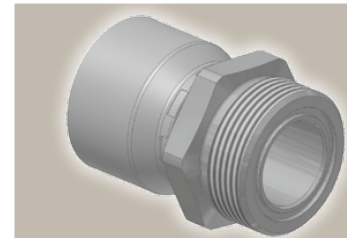
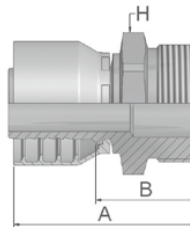


Part Number	Hose I.D.				Thread UNF	A mm	B mm	E mm	W mm
	DN	Inch	Size	mm					
1J916-4-4	6	1/4	-4	6.4	9/16x18	50	28	21	17
1J916-6-6	10	3/8	-6	9.5	11/16x16	52	29	23	22
1J916-8-8	12	1/2	-8	12.7	13/16x16	55	31	29	24
1J916-10-10	16	5/8	-10	15.9	1x14	65	39	32	30
1J916-12-12	19	3/4	-12	19.1	1 3/16x12	80	54	48	36
1J916-16-16	25	1	-16	25.4	1 7/16x12	98	68	56	41

**JM**

**ORFS Male**

ISO 12151-1-S – SAE J516



Part Number	Hose I.D.				Thread UNF	A mm	B mm	H mm
	DN	Inch	Size	mm				
1JM16-4-4	6	1/4	-4	6.4	9/16x18	44	22	17
1JM16-6-6	10	3/8	-6	9.5	11/16x16	47	24	19
1JM16-8-8	12	1/2	-8	12.7	13/16x16	51	27	22
1JM16-10-10	16	5/8	-10	15.9	1x14	57	32	27
1JM16-12-12	19	3/4	-12	19.1	1 3/16x12	60	34	32
1JM16-16-16	25	1	-16	25.4	1 7/16x12	67	37	41

Approved **fitting series** for hose types:

**16** BCH1 BCH2

Parkrimp No-Skive Fittings for SX Hoses

Series 73 and 77

Series 73

DIN – Metric

**C9**



Female Metric 24° – Swivel Heavy Series with O-Ring Straight  
ISO 12151-2-SWS-S – DKOS

**0C**



Female Metric 24° – Swivel Heavy Series with O-Ring 45° Elbow  
ISO 12151-2 – SWE-S – DKOS 45°

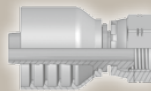
**1C**



Female Metric 24° – Swivel Heavy Series with O-Ring 90° Elbow  
ISO 12151-2-SWE-S – DKOS 90°

BSP

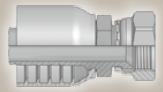
**92**



Female BSP Parallel Pipe Swivel – Straight (60° Cone)  
BS5200-A – DKR

SAE

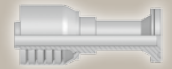
**06**



Female JIC 37° – Swivel Straight  
ISO12151-5-SWS – DKJ

Flange

**6A**



ISO 6162-2-Flange Straight  
ISO 12151-3-S-S – SFS  
(42.0 MPa/ 6000 psi)

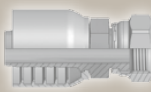
**6N**



ISO 6162-2-Flange 90° Elbow  
ISO 12151-3 – E-S – SFS 90°  
(42.0 MPa/ 6000 psi)

ORFS

**JC**



Female ORFS Swivel – Straight Short  
ISO 12151-1 – SWSA SAE J516 – ORFS

Series 77

DIN – Metric

**C9**



Female Metric 24° – Swivel Heavy Series with O-Ring Straight  
ISO 12151-2-SWS-S – DKOS

**0C**




Female Metric 24° – Swivel Heavy Series with O-Ring 45° Elbow  
ISO 12151-2 – SWE-S – DKOS 45°

**1C**



Female Metric 24° – Swivel Heavy Series with O-Ring 90° Elbow  
ISO 12151-2-SWE-S – DKOS 90°

**D2**



Male Metric 24° – Rigid Heavy Series – Straight  
ISO 12151-2-S-S – CES

BSP

**EA**



BSP Swivel Female with O-Ring (60° Cone)  
BS 5200 – ISO 12151-6 – DKOR

**EB**



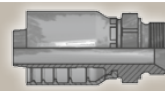
BSP Swivel Female with O-Ring 45° Elbow (60° Cone)  
BS 5200 – ISO 12151-6 – DKOR 45°

**EC**



BSP Swivel Female with O-Ring 90° Elbow (60° Cone)  
BS 5200 – ISO 12151-6 – DKOR 90°

**D9**



Male BSP Parallel Pipe Rigid – Straight (60° Cone)  
BS5200 – AGR

SAE

**06**



Female JIC 37° – Swivel Straight  
ISO12151-5-SWS – DKJ

**37**



Female JIC 37° – Swivel 45° Elbow  
ISO 12151-5-SWE 45° – DKJ 45°

**39**



Female JIC 37° – Swivel 90° Elbow  
ISO 12151-5-SWES – DKJ 90°

Flange

**15/4A**



ISO 6162-1-Flange Straight  
ISO 12151-3-S-L – SFL  
(35.0 MPa/ 5000 psi)

**17/4F**



ISO 6162-1-Flange 45° Elbow  
ISO 12151-3 – E45S – L – SFL 45°  
(35.0 MPa/ 5000 psi)

**19/4N**



ISO 6162-1-Flange 90° Elbow  
ISO 12151-3-E-L – SFL 90°  
(35.0 MPa/ 5000 psi)

**6A**



ISO 6162-2-Flange Straight  
ISO 12151-3-S-S – SFS  
(42.0 MPa/ 6000 psi)

**6F**



ISO 6162-2-Flange 45° Elbow – Heavy Series  
ISO 12151-3 – E45-S – SFS 45°  
(42.0 MPa/ 6000 psi)

**6N**



ISO 6162-2-Flange 90° Elbow  
ISO 12151-3 – E-S – SFS 90°  
(42.0 MPa/ 6000 psi)

Technical Details for these fittings you will find in CAT/4400

ORFS

**JC**



Female ORFS Swivel – Straight Short  
ISO 12151-1 – SWSA SAE J516 – ORFS

**J7**



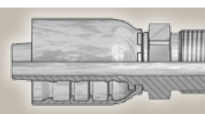
Female ORFS – Swivel 45° Elbow  
ISO 12151-1 – SWE 45° SAE J516 – ORFS 45°

**J9**



Female ORFS – Swivel 90° Elbow – Short Drop  
ISO 12151-1 – SWES SAE J516 – ORFS 90°

**JM**



ORFS Male  
ISO 12151-1-S – SAE J516



## KarryKrimp® 1, KarryKrimp® 2, Parkrimp® 2 Crimping Presses

Portable or bench-mounted easy-to-use hose assembly machines; an optimal alternative for your own assembling of a wide range of Parker *No-Skive* hose and fittings.

Ideal for workshops, repair shops and mobile service vehicles.

**Parkrimp®** *No-Skive*  
the problem solver for  
Your **DownTime**

### KarryKrimp® 1 82CE-061L



The KarryKrimp® 1 crimps the following hose types.

1 and 2 steel wire hose  
up to size -20

### KarryKrimp® 2 85CE-061L



The KarryKrimp® 2 crimps the following hose types with both steel and stainless steel fittings.

1 and 2 steel wire hose  
up to size -20

4 layer multispiral hose  
up to size -16

Compact Spiral hose  
up to size -12

### Parkrimp® 2 83CE-083U



The Parkrimp® 2 crimps the following hose types with both steel and stainless steel fittings.

1 and 2 steel wire hose  
up to size -32

4 and 6 layer multispiral hose  
up to size -32

Compact Spiral hose  
up to size -32

#### Fitting Series

16, 46, 48

Dimensions:  
H 760 x W 335 x D 330 mm  
Weight: 28 kg

#### Fitting Series

16, 46, 48, 70, 73, 77

Dimensions:  
H 805 x W 340 x D 350 mm  
Weight: 46 kg

#### Fitting Series

16, 46, 48, 70, 73, 77

Dimensions:  
H 1170 x W 530 x D 985 mm  
Weight: 370 kg

## Parkrimp® Colour-Coded Die Sets

- Mistake-proof crimping diameter setup
- A chain link keeping the segments together - no loss, mismatch or misplacement

- Ideal 360° round crimp for longer impulse life
- Easy selection by color



## Parker Worldwide

### Europe, Middle East, Africa

**AE – United Arab Emirates,** Dubai  
Tel: +971 4 8127100  
parker.me@parker.com

**AT – Austria,** Wiener Neustadt  
Tel: +43 (0)2622 23501-0  
parker.austria@parker.com

**AT – Eastern Europe,** Wiener Neustadt  
Tel: +43 (0)2622 23501 900  
parker.easteurope@parker.com

**AZ – Azerbaijan,** Baku  
Tel: +994 50 2233 458  
parker.azerbaijan@parker.com

**BE/LU – Belgium,** Nivelles  
Tel: +32 (0)67 280 900  
parker.belgium@parker.com

**BG – Bulgaria,** Sofia  
Tel: +359 2 980 1344  
parker.bulgaria@parker.com

**BY – Belarus,** Minsk  
Tel: +48 (0)22 573 24 00  
parker.poland@parker.com

**CH – Switzerland,** Etoy  
Tel: +41 (0)21 821 87 00  
parker.switzerland@parker.com

**CZ – Czech Republic,** Klecany  
Tel: +420 284 083 111  
parker.czechrepublic@parker.com

**DE – Germany,** Kaarst  
Tel: +49 (0)2131 4016 0  
parker.germany@parker.com

**DK – Denmark,** Ballerup  
Tel: +45 43 56 04 00  
parker.denmark@parker.com

**ES – Spain,** Madrid  
Tel: +34 902 330 001  
parker.spain@parker.com

**FI – Finland,** Vantaa  
Tel: +358 (0)20 753 2500  
parker.finland@parker.com

**FR – France,** Contamine s/Arve  
Tel: +33 (0)4 50 25 80 25  
parker.france@parker.com

**GR – Greece,** Athens  
Tel: +30 210 933 6450  
parker.greece@parker.com

**HU – Hungary,** Budaörs  
Tel: +36 23 885 470  
parker.hungary@parker.com

**IE – Ireland,** Dublin  
Tel: +353 (0)1 466 6370  
parker.ireland@parker.com

**IL – Israel**  
Tel: +39 02 45 19 21  
parker.israel@parker.com

**IT – Italy,** Corsico (MI)  
Tel: +39 02 45 19 21  
parker.italy@parker.com

**KZ – Kazakhstan,** Almaty  
Tel: +7 7273 561 000  
parker.easteurope@parker.com

**NL – The Netherlands,** Oldenzaal  
Tel: +31 (0)541 585 000  
parker.nl@parker.com

**NO – Norway,** Asker  
Tel: +47 66 75 34 00  
parker.norway@parker.com

**PL – Poland,** Warsaw  
Tel: +48 (0)22 573 24 00  
parker.poland@parker.com

**PT – Portugal**  
Tel: +351 22 999 7360  
parker.portugal@parker.com

**RO – Romania,** Bucharest  
Tel: +40 21 252 1382  
parker.romania@parker.com

**RU – Russia,** Moscow  
Tel: +7 495 645-2156  
parker.russia@parker.com

**SE – Sweden,** Spånga  
Tel: +46 (0)8 59 79 50 00  
parker.sweden@parker.com

**SK – Slovakia,** Banská Bystrica  
Tel: +421 484 162 252  
parker.slovakia@parker.com

**SL – Slovenia,** Novo Mesto  
Tel: +386 7 337 6650  
parker.slovenia@parker.com

**TR – Turkey,** Istanbul  
Tel: +90 216 4997081  
parker.turkey@parker.com

**UA – Ukraine,** Kiev  
Tel: +48 (0)22 573 24 00  
parker.poland@parker.com

**UK – United Kingdom,** Warwick  
Tel: +44 (0)1926 317 878  
parker.uk@parker.com

**ZA – South Africa,** Kempton Park  
Tel: +27 (0)11 961 0700  
parker.southafrica@parker.com

### North America

**CA – Canada,** Milton, Ontario  
Tel: +1 905 693 3000

**US – USA,** Cleveland  
Tel: +1 216 896 3000

### Asia Pacific

**AU – Australia,** Castle Hill  
Tel: +61 (0)2-9634 7777

**CN – China,** Shanghai  
Tel: +86 21 2899 5000

**HK – Hong Kong**  
Tel: +852 2428 8008

**IN – India,** Mumbai  
Tel: +91 22 6513 7081-85

**JP – Japan,** Tokyo  
Tel: +81 (0)3 6408 3901

**KR – South Korea,** Seoul  
Tel: +82 2 559 0400

**MY – Malaysia,** Shah Alam  
Tel: +60 3 7849 0800

**NZ – New Zealand,** Mt Wellington  
Tel: +64 9 574 1744

**SG – Singapore**  
Tel: +65 6887 6300

**TH – Thailand,** Bangkok  
Tel: +662 186 7000

**TW – Taiwan,** Taipei  
Tel: +886 2 2298 8987

### South America

**AR – Argentina,** Buenos Aires  
Tel: +54 3327 44 4129

**BR – Brazil,** Sao Jose dos Campos  
Tel: +55 800 727 5374

**CL – Chile,** Santiago  
Tel: +56 2 623 1216

**MX – Mexico,** Toluca  
Tel: +52 72 2275 4200

European Product Information Centre  
Free phone: 00 800 27 27 5374  
(from AT, BE, CH, CZ, DE, DK, EE, ES, FI,  
FR, IE, IL, IS, IT, LU, MT, NL, NO, PL, PT, RU,  
SE, SK, UK, ZA)