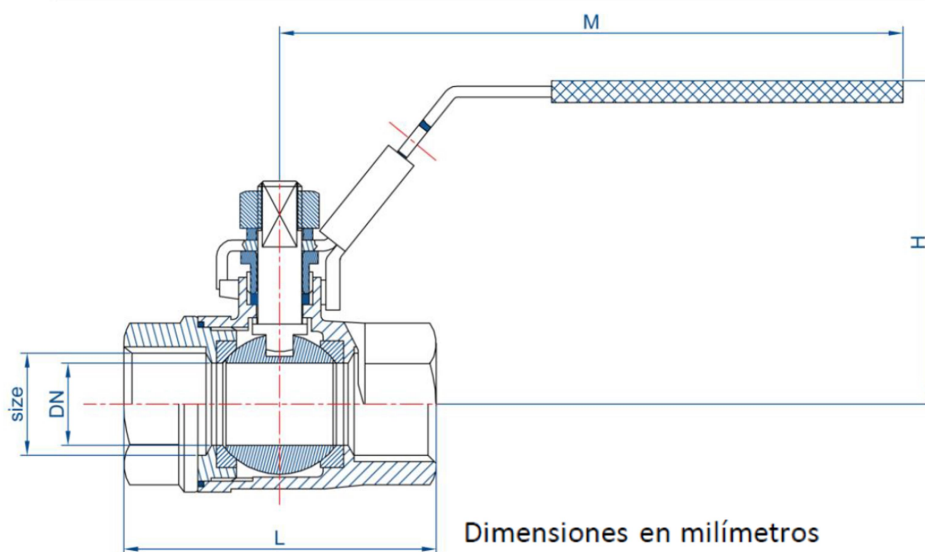


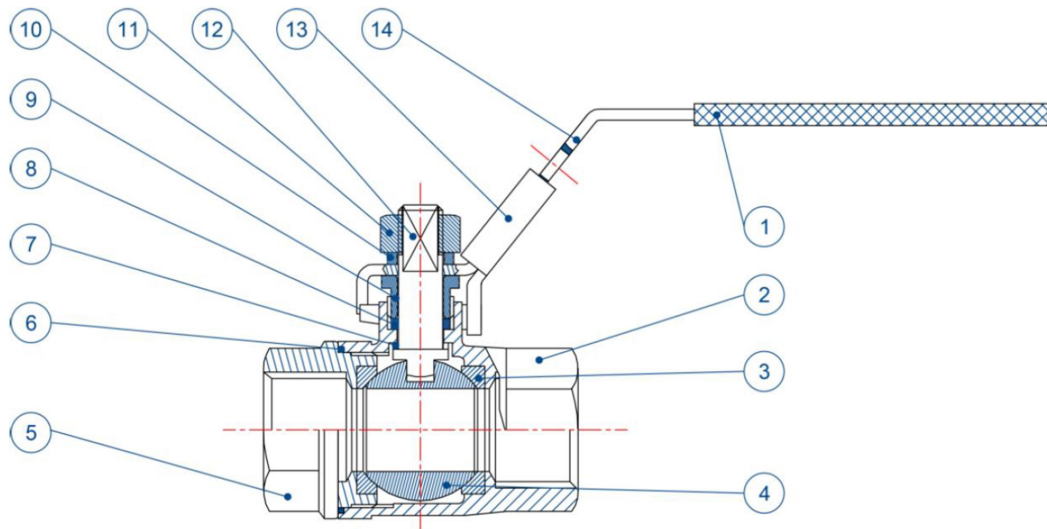


# ACDRA 10

VÁLVULA DE BOLA 2 PIEZAS INOX 316 ROSCADA GAS PN 63



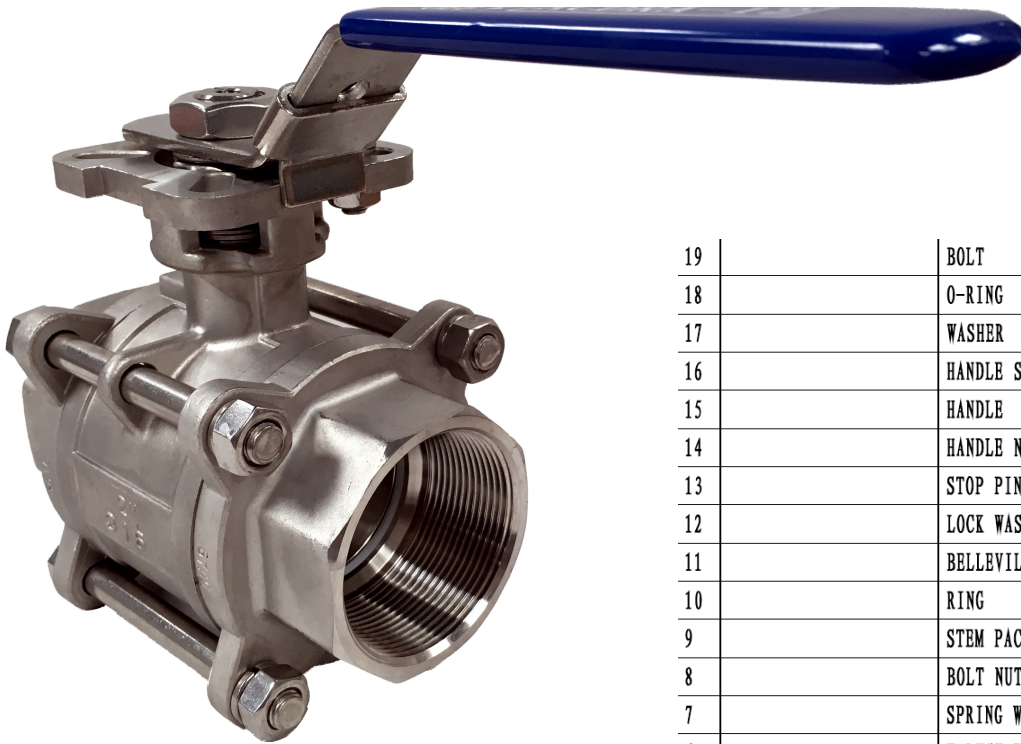
MEDIDA SIZE	DN			L	H	M
1/4"	9	48	24	48	46	100
3/8"	12.5	48	24	48	47	100
1/2"	15	32	16	56	48	100
3/4"	20	24	12	64	57,5	112
1"	25	16	8	76	61	112
1 1/4"	32	10	1	86,5	77,5	145
1 1/2"	38	10	1	97,5	82	145
2"	50	6	1	117,5	98	165
2 1/2"	65	4	1	144	118	230
3"	76	3	1	165	127,5	230



Nº	NOMBRE NAME	MATERIAL	CALIDAD QUALITY
1	Cobertura maneta / <i>Handle cover</i>	Plástico / <i>Plastic</i>	---
2	Cuerpo / <i>Body</i>	Acero Inoxidable / <i>Stainless Steel</i>	CF8M
3	Asiento / <i>Seat</i>	PTFE	PTFE
4	Bola / <i>Ball</i>	Acero Inoxidable / <i>Stainless Steel</i>	AISI 316
5	Tapa / <i>Cap</i>	Acero Inoxidable / <i>Stainless Steel</i>	CF8M
6	Junta / <i>Gasket</i>	PTFE	PTFE
7	Junta base eje / <i>Stem joint</i>	PTFE	PTFE
8	Empaquetadura eje <i>Packing gland</i>	PTFE	PTFE
9	Prensaestopa / <i>Packing nut</i>	Acero Inoxidable / <i>Stainless Steel</i>	AISI 304
10	Arandela muelle / <i>Spring washer</i>	Acero Inoxidable / <i>Stainless Steel</i>	AISI 304
11	Tuerca / <i>Nut</i>	Acero Inoxidable / <i>Stainless Steel</i>	AISI 304
12	Eje / <i>Stem</i>	Acero Inoxidable / <i>Stainless Steel</i>	AISI 304
13	Mecanismo bloqueo / <i>Lock device</i>	Acero Inoxidable / <i>Stainless Steel</i>	AISI 304
14	Maneta / <i>Handle</i>	Acero Inoxidable / <i>Stainless Steel</i>	AISI 304

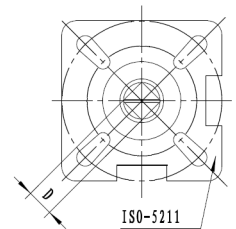
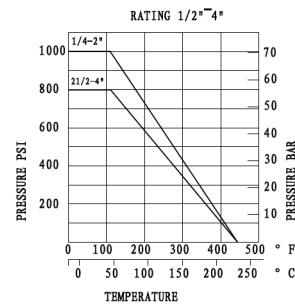
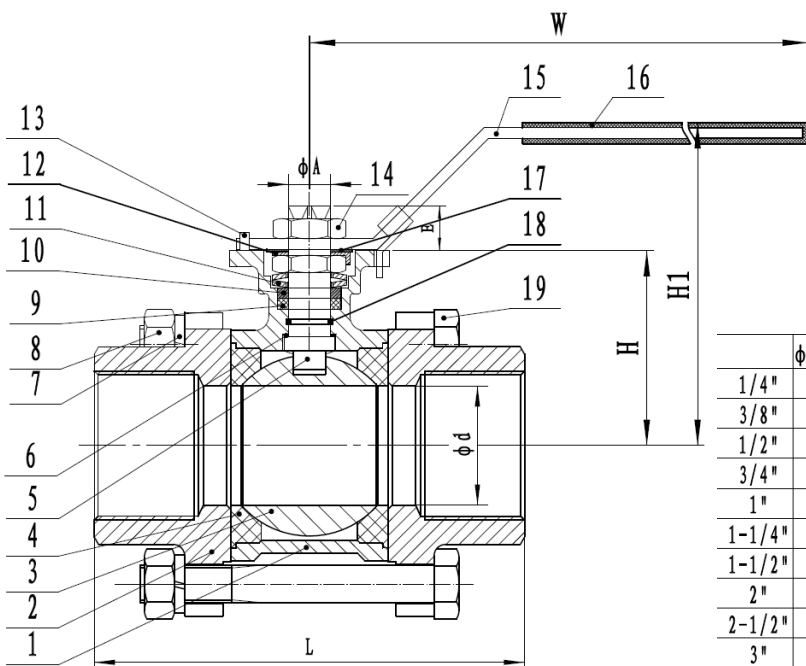
# ACDRA 12

## VÁLVULA DE BOLA 3 PIEZAS INOX 316 ROSCADA GAS PN 63



- VÁLVULAS DE BOLA 3 PIEZAS, PASO TOTAL
- MATERIAL EN10213-4 1.4408
- EXTREMOS ROSCADOS GAS SEGÚN DIN 2999
- ACCIONAMIENTO POR PALANCA
- CON CERTIFICADOS DE CALIDAD
- PLATINA ISO 5211 MONTAJE DIRECTO ACTUADOR
- TOPE BLOQUEO PALANCA

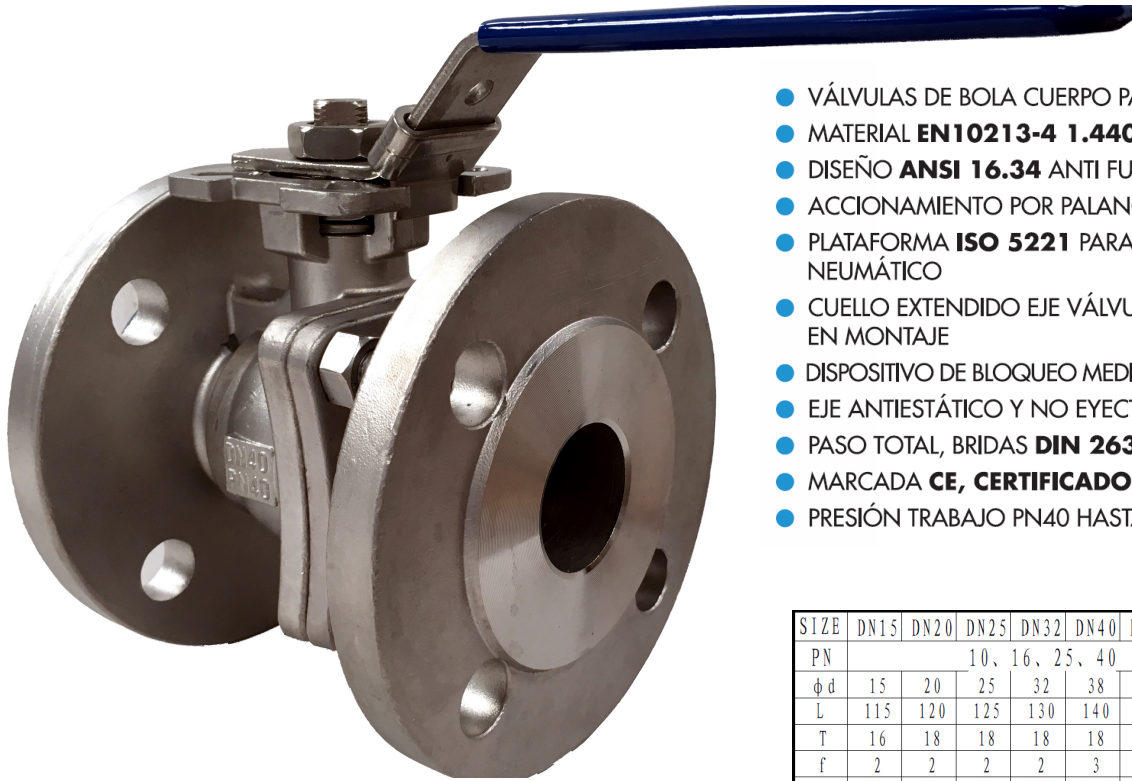
19	BOLT	4 (6)	304
18	O-RING	1	VITON
17	WASHER	1	304
16	HANDLE SLEEVE	1	PLASTIC
15	HANDLE	1	304
14	HANDLE NUT	2	304
13	STOP PIN	1	304
12	LOCK WASHER	1	304
11	BELLEVILLE WASHER	2	301
10	RING	1	304
9	STEM PACKING	1	PTFE
8	BOLT NUT	4 (6)	304
7	SPRING WASHER	4 (6)	304
6	THRUST WASHER	1	PTFE
5	STEM	1	304/316
4	SEAT	2	PTFE
3	BALL	1	CF8M/CF8
2	CAP	2	CF8M/CF8
1	BODY	1	CF8M/CF8



	$\phi d \pm 0.5$	$L \pm 2$	$H \pm 1$	$D_{-0.07}^0$	$E \pm 1$	$A_{-0.3}^0$	ISO5211	W	H1
1/4"	11.6	55	38.5	9	9	12	F04/03	143	70
3/8"	12.5	60	38.5	9	9	12	F04/03	143	70
1/2"	15	75	38.5	9	9	12	F04/03	143	70
3/4"	20	80	47.5	9	9	12	F04/03	143	79
1"	25	90	59	11	11	14	F05/04	163	95
1-1/4"	32	110	63.5	11	11	14	F05/04	163	95
1-1/2"	38	120	79	14	15	18	F07/05	188	116
2"	50	140	86.5	14	15	18	F07/05	188	124
2-1/2"	64	162	109.1	17	17	22	F10/07	350	141
3"	76	184	117	17	17	22	F10/07	350	149
4"	94	228	136	22	22	28	F12/10	350	173

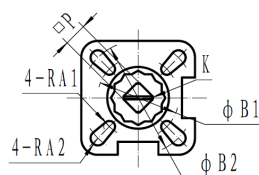
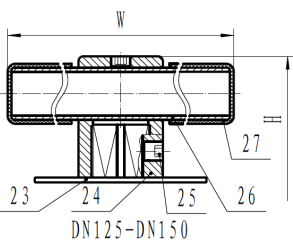
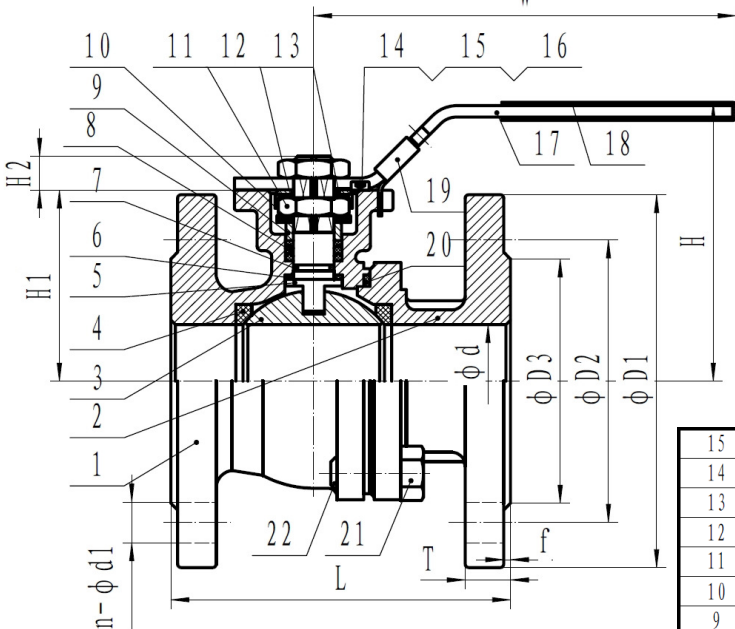
# ACDRA20

VÁLVULA DE BOLA 2 VÍAS INOX 316 BRIDAS PN 16/40



- VÁLVULAS DE BOLA CUERPO PARTIDO SPLIT BODY, PASO TOTAL
- MATERIAL **EN10213-4 1.4408**
- DISEÑO **ANSI 16.34** ANTI FUEGO
- ACCIONAMIENTO POR PALANCA
- PLATAFORMA **ISO 5221** PARA MONTAJE DE ACTUADOR NEUMÁTICO
- CUELLO EXTENDIDO EJE VÁLVULA PARA MAYOR COMODIDAD EN MONTAJE
- DISPOSITIVO DE BLOQUEO MEDIANTE CANDADO (no suministrado)
- EJE ANTIESTÁTICO Y NO EYECTABLE
- PASO TOTAL, BRIDAS **DIN 2633 PN 16/40, DIN 3202 F4**
- MARCADA **CE, CERTIFICADO EN 10204:2004-3.1**
- PRESIÓN TRABAJO PN40 HASTA DN50, SUPERIOR PN16

SIZE	DN15	DN20	DN25	DN32	DN40	DN50	DN65	DN80	DN100	DN125	DN150
PN	10, 16, 25, 40						10, 16				
$\phi d$	15	20	25	32	38	50	65	76	100	120	150
L	115	120	125	130	140	150	170	180	190	325	350
T	16	18	18	18	18	20	18	20	20	22	22
f	2	2	2	2	3	3	3	3	3	3	3
D1	95	105	115	140	150	165	185	200	220	250	285
D2	65	75	85	100	110	125	145	160	180	210	240
D3	45	58	68	78	88	102	122	138	158	188	212
n	4	4	4	4	4	4	4	8	8	8	8
$\phi d1$	14	14	14	18	18	18	18	18	18	18	22
H1	48	53	58.5	71	76	84.5	101.5	111.5	141	160	184
H2	8	8	11	11	14	14	17	17	22	40.5	40.5
H	80	85	95	108	114	124	148	158	189	242	270
W	140	140	160	160	185	185	230	230	320	500	800
K	M12x1.5	M12x1.5	M14x1.5	M14x1.5	M18x1.5	M18x1.5	M22x1.5	M22x1.5	M28x2	M36x2	M36x2
P	9	9	11	11	14	14	17	17	22	27	27
A1	3	3	3	3	3.5	3.5	4.5	4.5		M12	M12
A2	3	3	3.5	3.5	4.5	4.5	5.5	5.5	M10		
B1	36	36	42	42	50	50	70	70		125	125
B2	42	42	50	50	70	70	102	102	102		

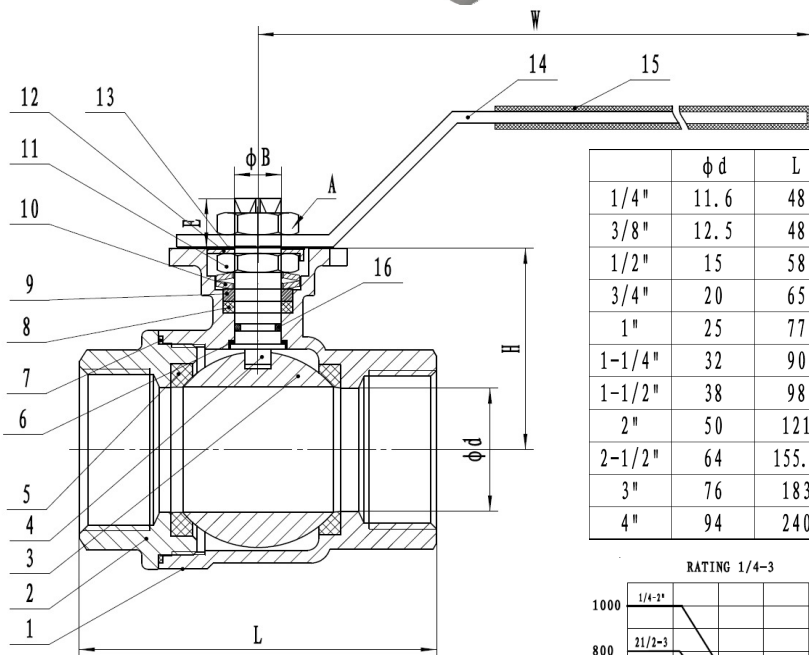


15	NUT	304			
14	STOP BOLT	304			
13	WASHER	304			
12	THRUST WASHER	304	27	PLASTIC COVER	PLASTIC
11	NUT	304	26	HANDLE	304
10	Belleville Washer	301	25	Set Screwed	304
9	GLAND	304	24	Handle Adapter	304
8	V-RING PACKING	PTFE	23	Triangle Stopper	304
7	O-RING	NBR	22	BOLT	304
6	STEM PACKING	PTFE	21	NUT	304
5	STEM	304	20	BODY GASKET	PTFE
4	BALL SEAT	RPTFE	19	LOCKING	304
3	BALL	1.4408/1.4308	18	PLASTIC COVER	PLASTIC
2	CAP	1.4408/1.4308	17	HANDLE	304
1	BODY	1.4408/1.4308	16	WASHER	304
ITEM	DESIGNATION	MATERIAL	ITEM	DESIGNATION	MATERIAL

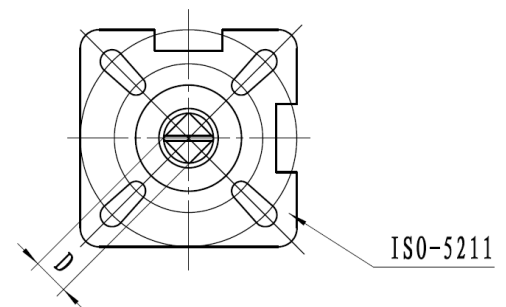
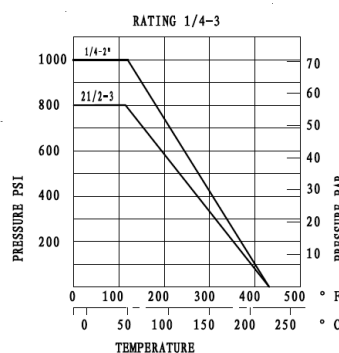


- VÁLVULAS DE BOLA 2 PIEZAS, PASO TOTAL
- MATERIAL **EN10213-4 1.4408**
- EXTREMOS ROSCADOS GAS SEGÚN **DIN 2999**
- ACCIONAMIENTO POR PALANCA
- CON CERTIFICADOS DE CALIDAD

16	O-RING	VITON			
15	PLASTIC COVER	PLASTIC			
14	HANDLE	304			
13	WASHER	304			
12	AGAINST PINE PAD	304			
11	STEM NUT	304			
10	SPRING WASHER	301			
9	GLAND RING	304			
8	STEM PACKING	PTFE			
7	BODY SEAL	PTFE			
6	THRUST WASHER	PTFE			
5	SEAT	PTFE			
4	STEM	304/316			
3	BALL	304/316			
2	CAP	CF8/CF8M			
1	BODY	CF8/CF8M			

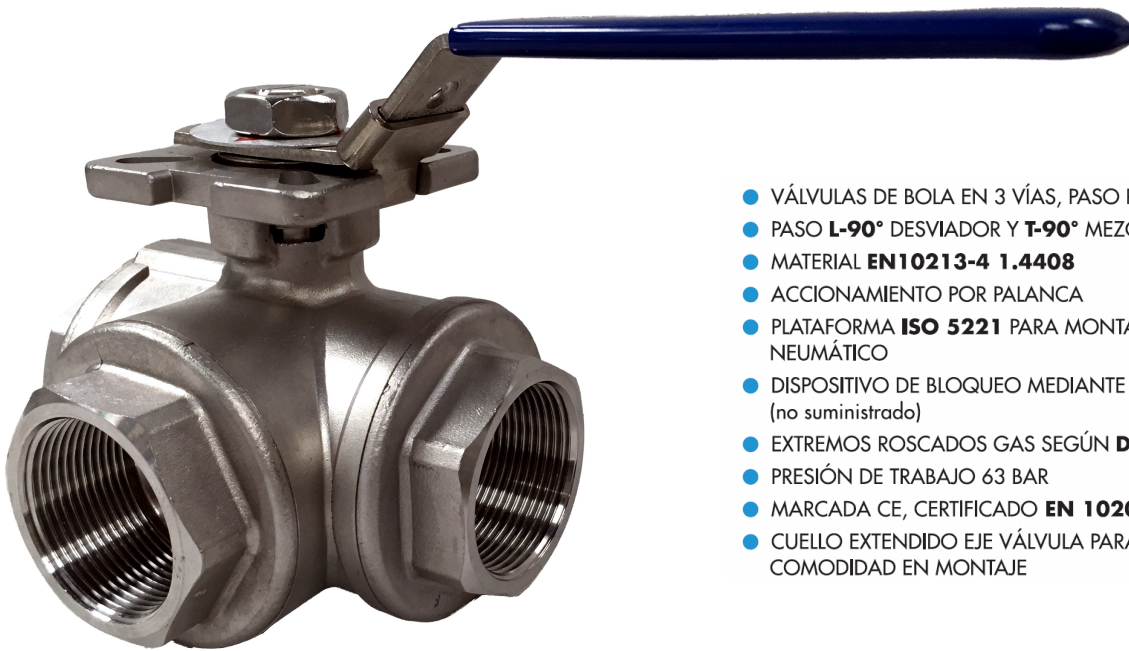


	$\phi d$	L	H	D	E	B	W	ISO5211
1/4"	11.6	48	36.5	9	9	12	143	F04/03
3/8"	12.5	48	36.5	9	9	12	143	F04/03
1/2"	15	58	37.8	9	9	12	143	F04/03
3/4"	20	65	42.5	9	9	12	143	F04/03
1"	25	77	45	11	11	14	163	F05/04
1-1/4"	32	90	51.5	11	11	14	163	F05/04
1-1/2"	38	98	59.5	14	14	18	188	F07/05
2"	50	121	68.5	14	14	18	188	F07/05
2-1/2"	64	155.6	92	17	17	22	350	F10/07
3"	76	183	101	17	17	22	350	F10/07
4"	94	240	133	22	22	28	350	F12/10

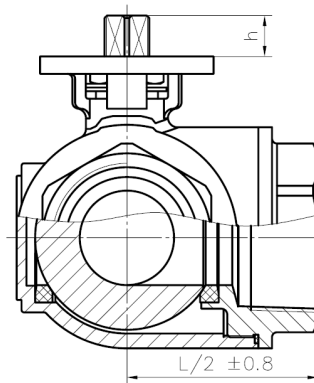
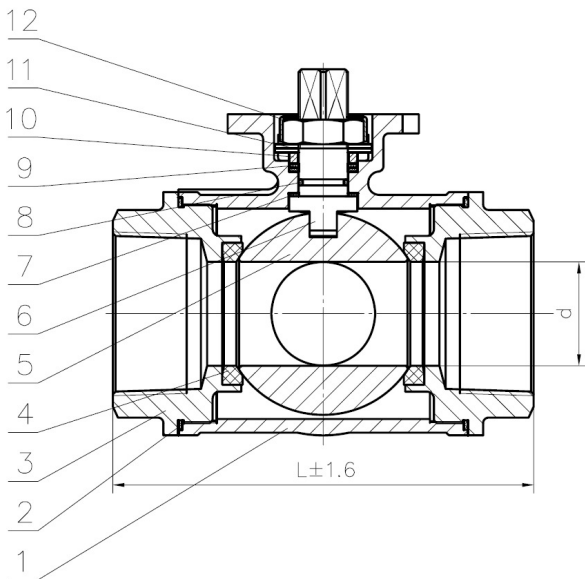


# ACDRA 15

## VÁLVULA DE BOLA 3 VÍAS INOX 316 ROSCADA GAS PN 63



- VÁLVULAS DE BOLA EN 3 VÍAS, PASO REDUCIDO
- PASO **L-90°** DESVIADOR Y **T-90°** MEZCLADOR
- MATERIAL **EN10213-4 1.4408**
- ACCIONAMIENTO POR PALANCA
- PLATAFORMA **ISO 5221** PARA MONTAJE DE ACTUADOR NEUMÁTICO
- DISPOSITIVO DE BLOQUEO MEDIANTE CANDADO (no suministrado)
- EXTREMOS ROSCADOS GAS SEGÚN **DIN 2999**
- PRESIÓN DE TRABAJO 63 BAR
- MARCADA CE, CERTIFICADO **EN 10204:2004-3.1**
- CUELLO EXTENDIDO EJE VÁLVULA PARA MAYOR COMODIDAD EN MONTAJE

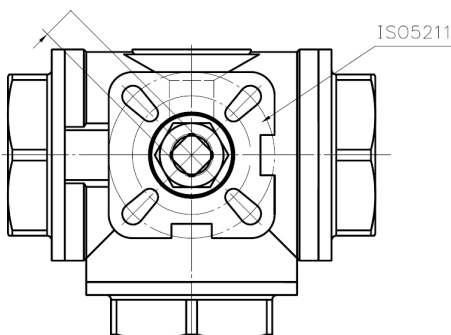


4"	100	74	254	22.5	300	F07/F10	19
3"	80	55	212	20	260	F07/F10	17
2 1/2"	65	48	185	20	260	F07/F10	17
2"	50	38	154	16.5	180	F05/F07	14
1 1/2"	40	32	137	16.5	160	F05/F07	14
1 1/4"	32	25	128	12	150	F04/F05	11
1"	25	18	90	11	135	F04/F05	11
3/4"	20	15	82	9.5	125	F03/F04	9
1/2"	15	12	72	8.5	125	F03/F04	9
3/8"	12	11	72	8.5	125	F03/F04	9
1/4"	11	11	72	8.5	125	F03/F04	9
NPS	DN	d	L	h	E	ISO5211	b

Flow Patterns T-port

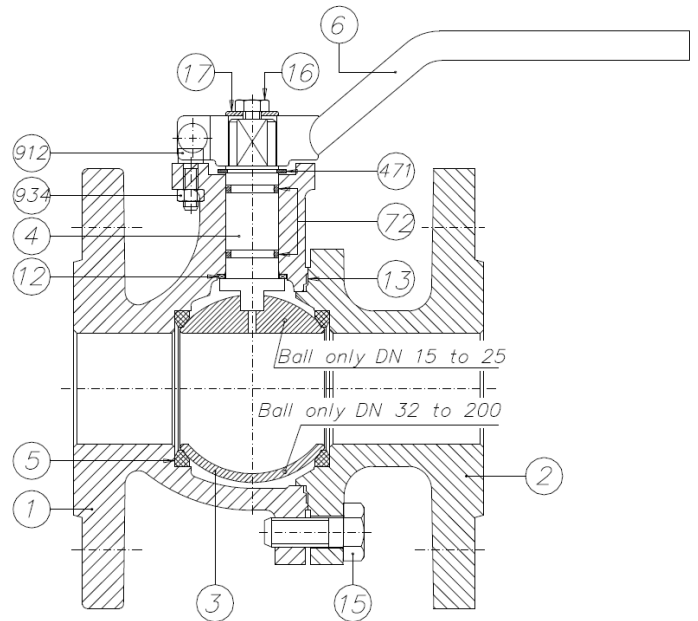
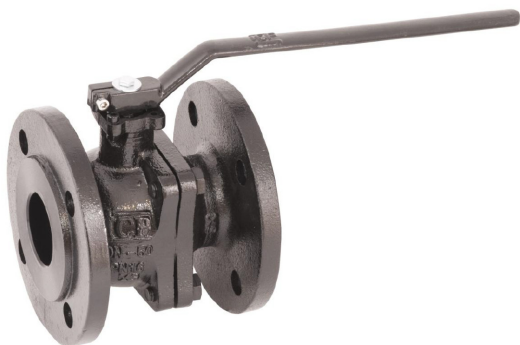


Flow Patterns L-port

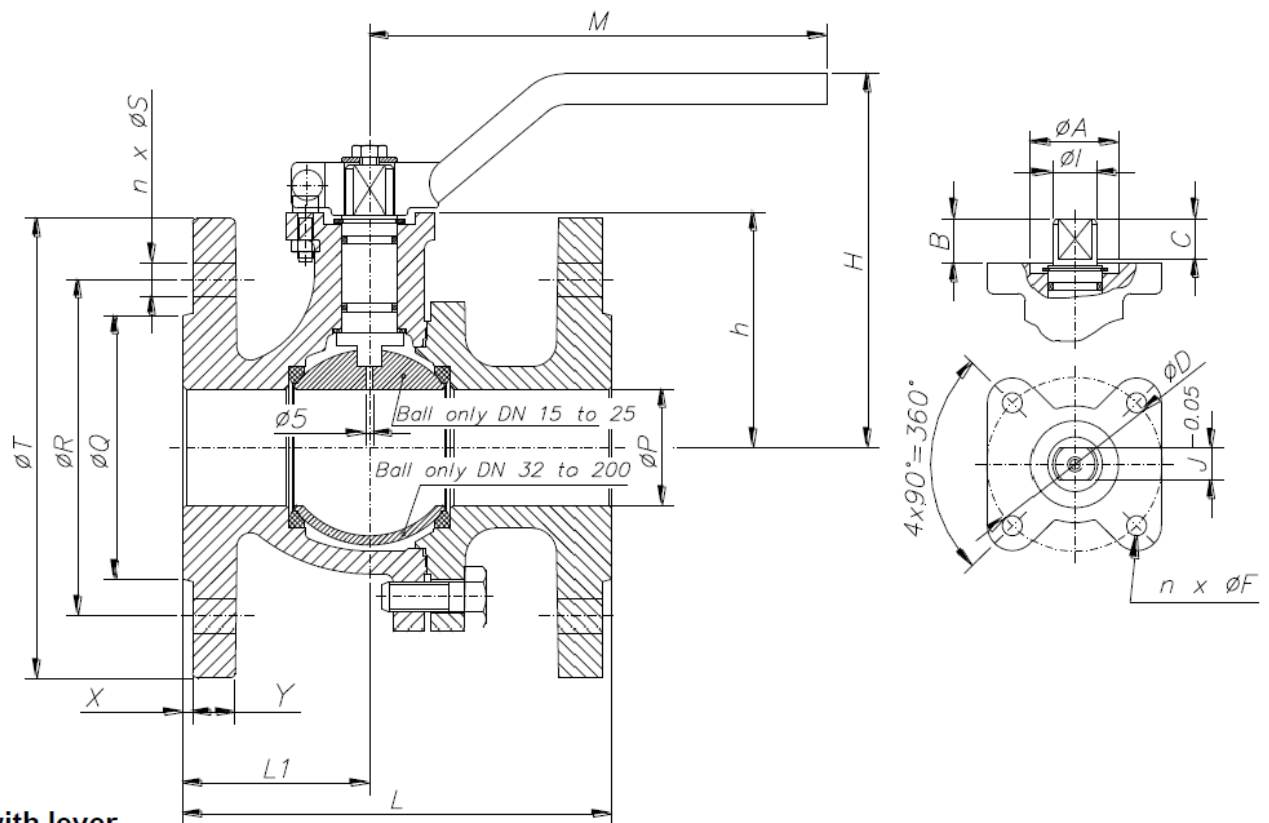


12	Loose resistant cover	1	201/304
11	Disc spring	2	SS
10	Packing gland	1	201/304
9	Packing	2	PTFE
8	O ring	1	NBR/VITON
7	Thrust washer	1	PTFE
6	Stem	1	304/316
5	Ball	1	CF8/CF8M
4	Seat	4	PTFE
3	Cap	3	CF8/CF8M
2	Seal gasket	3	PTFE
1	Body	1	CF8/CF8M
NO.	Name	qty	Material

# Ball Valves PN 16 HIT Construction (Cast Iron)



Item	Description	Material
1	Body	EN-GJL-250
2	Body connector	EN-GJL-250
3	Ball	DN 15 to 25: AISI 303 DN 32 to 200: AISI 304
4	Stem	AISI 304
5	Seat ring	PTFE
6	Wrench	Carbon steel
12	Stem thrust seal	PTFE
13	Body connector seal	PTFE
15	Bolt	DIN 933 5.6
16	Bolt	DIN 933 5.6
17	Washer	Zinc plated carbon steel
72	"O" Ring	FKM
471	Washer	DIN 471 Carbon St.
912	Bolt	DIN 912 8.8
934	Nut	DIN 934 8



Valve with lever

DN	ØP	L	L1	ØQ	ØR	n x ØS	ØT	X	Y	h	M	H	WEIGHT
15 (½")	13	115	49	45	65	4x14	95	2	12	48,5	170	92	2,12
20 (¾")	17	120	55,5	58	75	4x14	105	2	14	53	170	95,5	2,72
25 (1")	24	125	51,5	68	85	4x14	115	2	14	59,5	170	102,2	3,62
32 (1¼")	31	130	53	78	100	4x18	140	2	14	72	170	114,7	5,32
40 (1½")	38	140	61	88	110	4x18	150	3	13	77	302,5	119	6,9
50 (2")	50	150	62	102	125	4x18	165	3	15	85	302,5	127	9
65 (2½")	65	170	81,5	122	145	4x18 (**)	185	3	15	98	224	141	11,68
80 (3")	80	180	79	138	160	8x18	200	3	17	108,5	335	151,5	14,68
100 (4")	100	190	94	158	180	8x18	220	3	17	134	350	176,5	20,23
125 (5")	125	325	120,5	188	210	8x18	250	3	19	165	350	208	33,73
150 (6")	150	350	155	212	240	8x22	285	3	19	190	500	254,5	49,77
200 (8")	200	400	190	268	295	12x22	340	3	21	229	500	293,5	81,77

(\*) Dimensions in mm and weight in kg.

(\*\*) According to UNE-EN 1092-2 we can supply with 8 holes under client demand

#### Free stem dimensions

DN	ISO 5211	ØA	B	C	ØD	n x ØF	ØI	J	WEIGHT
15 (½")	F04	19	7,5	5,5	42	4x5	10	7	2
20 (¾")	F04	19	6	5	42	4x5	10	7	2,6
25 (1")	F04	21	6,2	5	42	4x5	10	7	3,5
32 (1¼")	F04	21	6,7	5,5	42	4x5	10	7	5,2
40 (1½")	F04	30	15	16	42	4x5	16	12	6,5
50 (2")	F04	30	15	16	42	4x5	16	12	8,6
65 (2½")	F07	35	18	19	70	4x8	18	13	11
80 (3")	F07	35	18	19	70	4x8	18	13	14
100 (4")	F07	38	19	20	70	4x8	22	16	19,5
125 (5")	F07	38	19,5	20	70	4x8	22	16	33
150 (6")	F10	50	24,5	27	102	4x10	28	20	47,5
200 (8")	F10	50	24,5	27	102	4x10	28	20	79,5

(\*) Dimensions in mm and weight in kg.

GENERAL CHARACTERISTICS	Fig.150 Series <b>SFF</b>	<b>Split Body</b>	<b>Floating Ball</b>	<b>Full Bore</b>
<b>DESIGN STANDARDS</b>				
Valves design	DIN 3357			
Body design	DIN 3840			
Flanges	EN 1092-2 (DIN 2501)			
Face to face dimensions	EN 558-1 SERIE 27 (DIN 3202 F18)			
Actuator mounting flange	DIN 3337		ISO 5211	
Marking	EN 19	CE ≥ DN50		
<b>TESTS AND CERTIFICATES</b>				
Quality Assurance	ISO 9001			
Pressure testing	EN 12266-1			

### Torque Values in Nm

VALVE SIZE	AT DIFFERENTIAL PRESSURE		VALVE SIZE	AT DIFFERENTIAL PRESSURE	
	16 bar			16 bar	
15 (½")	6		65 (2½")	41	
20 (¾")	6		80 (3")	71	
25 (1")	11		100 (4")	119	
32 (1¼")	12		125 (5")	190	
40 (1½")	26		150 (6")	220	
50 (2")	41		200 (8")	450	

Given torques with clean water at ambient temperature.

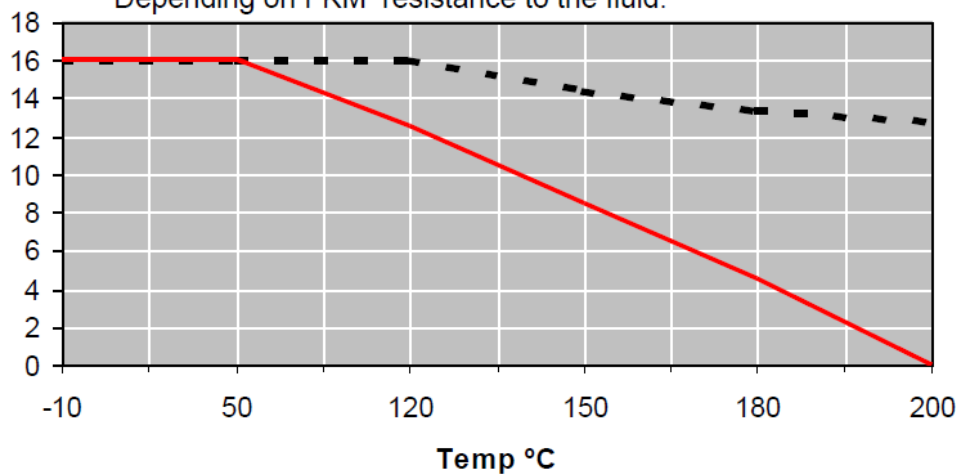
### Kv Values in m³/h

VALVE SIZE	Kv	VALVE SIZE	Kv
15 (½")	37,4	65 (2½")	660
20 (¾")	74,8	80 (3")	1200
25 (1")	105	100 (4")	1980
32 (1¼")	176	125 (5")	3600
40 (1½")	223	150 (6")	5040
50 (2")	416	200 (8")	10890

### Pressure-Temperature

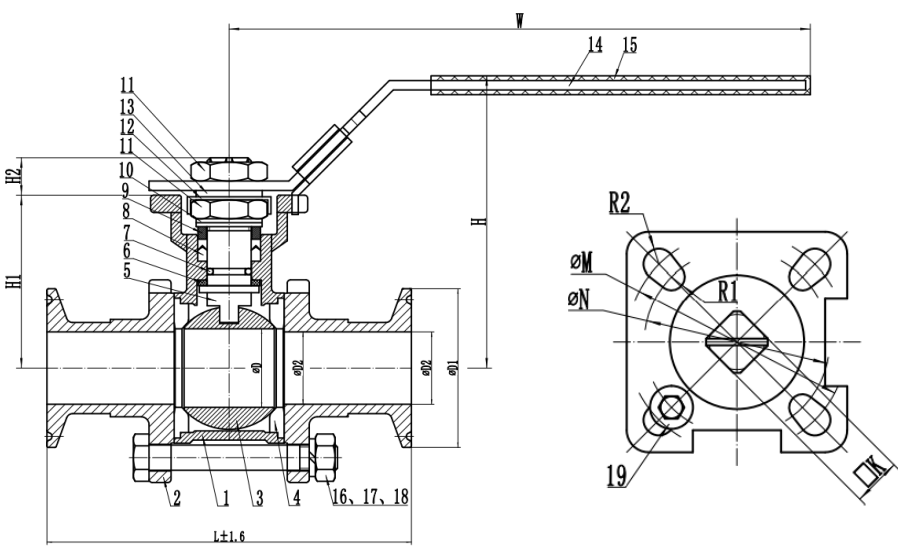
P (bar)

\* Depending on FKM resistance to the fluid.



# ACDRA 12

VÁLVULA DE BOLA 3 PIEZAS INOX 316



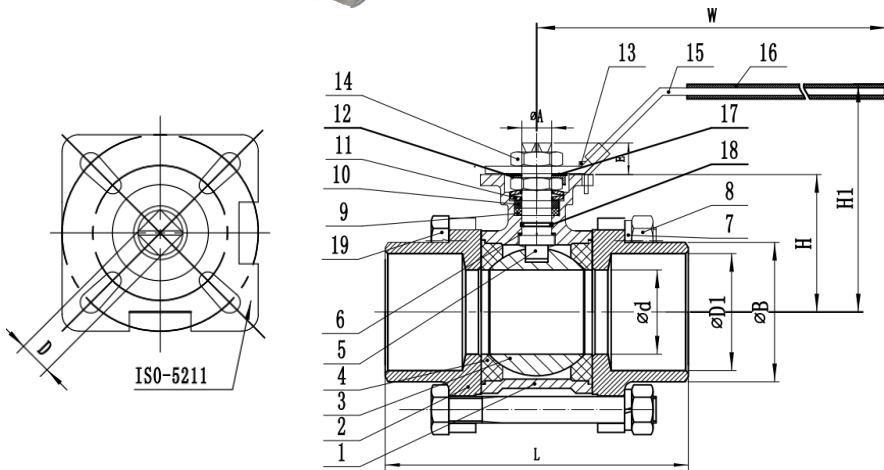
NO	PART NAME	MATERIAL	Q' TY
1	BODY	CF8/CF8M	1
2	CAP	CF8/CF8M	1
3	BALL	304/316	1
4	BALL SEAT	PTFE/RPTFE	2
5	STEM	304/316	1
6	THRUST WASHER	PTFE	1
7	O-Ring	NBR/VITON	1
8	STEM PACKING	PTFE	1
9	GLAND RING	304	1
10	BELLEVILLE WASHER	304	2
11	STEM NUT	304	2
12	LOCK WASHER	304	1
13	WASHER	304	1
14	HANDLE	304	1
15	PLASTIC COVER	PLASTIC	1
16	BOLT	304	4
17	SPRING WASHER	304	8
18	BOLT NUT	304	8
19	STOP PIN	304	1

	øD	øD2	L	H1	H2	øN	øM	R1	R2	□K	øD1	H	W
1/2"	15	9.5	90	42	9	36	42	3	3	9	25.4	75	140
3/4"	20	15.8	90	48	9	36	42	3	3	9	25.4	75	140
1"	25	22.2	100	55	11	42	50	3	3.5	11	50.5	93	160
1 1/2"	38	34.9	125	70	15	50	70	3.5	4.5	14	50.5	109	190
2"	50	47.6	150	85	15	50	70	3.5	4.5	14	64	124	190

# ACDRA 12

VÁLVULA DE BOLA 3 PIEZAS INOX 316

**SOLDAR  
BW**



19	BOLT	4(6)	304
18	O-RING	1	VITON
17	WASHER	1	304
16	HANDLE SLEEVE	1	PLASTIC
15	HANDLE	1	304
14	HANDLE NUT	2	304
13	STOP PIN	1	304
12	LOCK WASHER	1	304
11	BELLEVILLE WASHER	2	301
10	RING	1	304
9	STEM PACKING	1	PTFE
8	BOLT NUT	4(6)	304
7	SPRING WASHER	4(6)	304
6	THRUST WASHER	1	PTFE
5	STEM	1	304/316
4	SEAT	2	PTFE
3	BALL	1	CF8M/CF8
2	CAP	2	CF8M/CF8
1	BODY	1	CF8M/CF8

	$\varnothing d \pm 0.5$	$L \pm 2$	$H \pm 1$	$D - 0.07^0$	$E \pm 1$	$A - 0.3^0$	ISO5211	W	H1	D1	B
1/4"	11.6	60	38.5	9	9	12	F04/03	143	70	10.8	18
3/8"	12.5	60	38.5	9	9	12	F04/03	143	70	13	18
1/2"	15	70	38.5	9	9	12	F04/03	143	70	16	23
3/4"	20	85	47.5	9	9	12	F04/03	143	79	21	28
1"	25	95	59	11	11	14	F05/04	163	95	26.6	35
1-1/4"	32	110	63.5	11	11	14	F05/04	163	100	35	43
1-1/2"	38	120	79	14	15	18	F07/05	188	116	40.5	50
2"	50	142	86.5	14	15	18	F07/05	188	124	52.5	61
2-1/2"	64	166	109.1	17	17	22	F10/07	350	141	65	75
3"	76	182	117	17	17	22	F10/07	350	149	78	91
4"	94	227	136	22	22	28	F12/10	350	173	100	115